

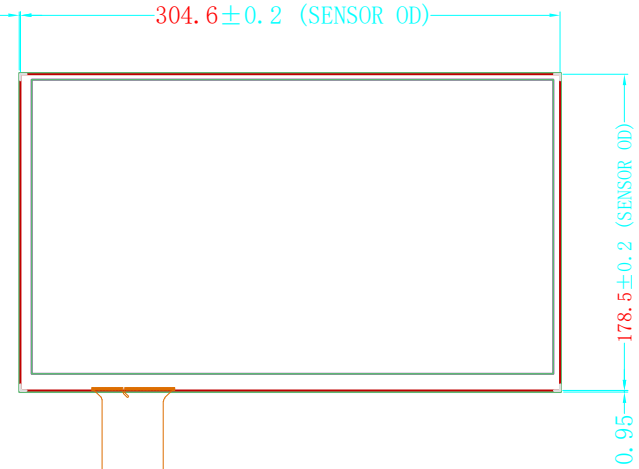
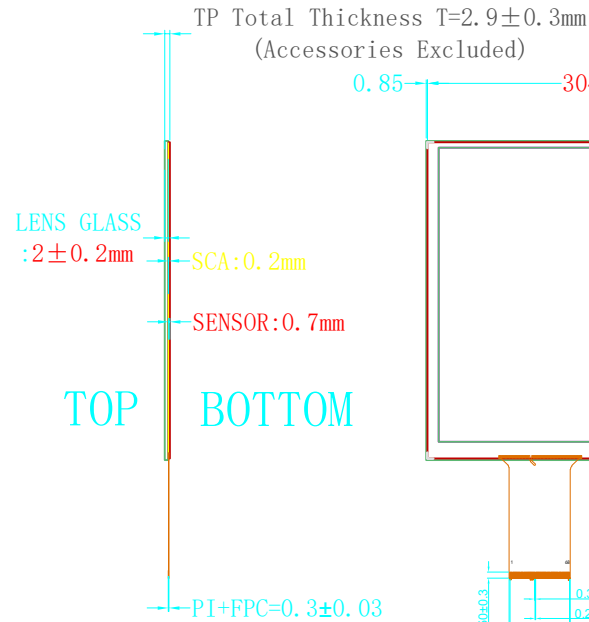
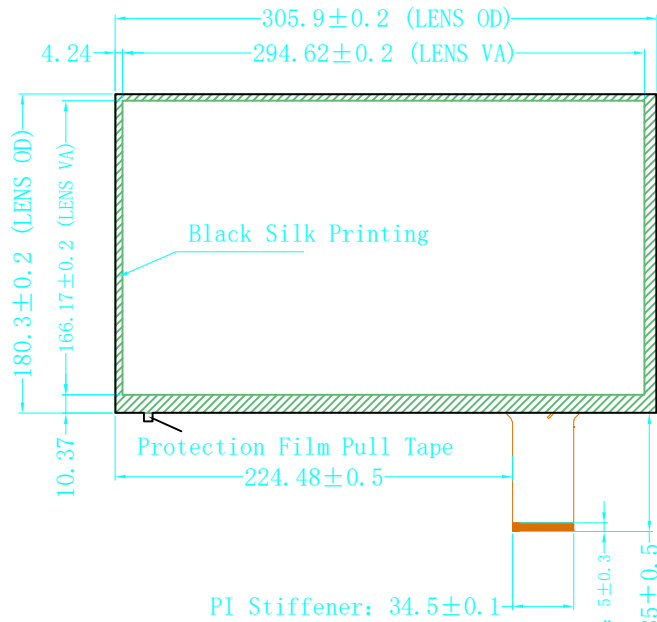
客户签名:

日期:

Front View

Side View

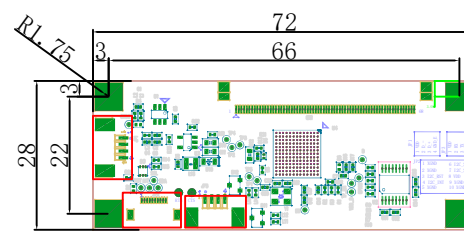
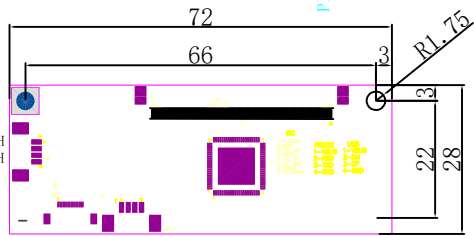
Back View



(G+G Structure)

T=5.25±0.5
PCB T=1.6±0.1
TP连接器T=1.8
焊接T=0.15
USB T=3.5
IIC T=2

- Technical Parameters:
1. GLASS+SCA+GlassITO+FPC
2. COF: IC:IC2511MP.C2.P1.V1
3. Glass Material: Asahi Glass
4. Glass Transparency: ≥86%
5. Glass Surface Hardness: ≥6H
6. TP Working Environment: -10°C~+60°C, ≤90%RH
7. TP Storage Environment: -20°C~+70°C, ≤90%RH
8. ROHS Compliant
9. Unmarked Tolerance ±0.2mm



I/L1 I2C Communication	
PIN	Definition
1	GND
2	GND
3	VDD
4	SDA
5	SCL
6	GND
7	INT
8	RST
9	GND
10	GND

J1 (USB Communication)	
PIN	Definition
1	VDD/5V
2	D-
3	D+
4	GND

EXC I2C Communication	
PIN	Definition
1	GND
2	GND
3	RST
4	INT
5	GND
6	SCL
7	SDA
8	VDD
9	GND
10	GND

物料	NO.	更改内容	日期
	1		
	2		
	3		
	4		
	5		
	6		
	7		

工程确认图			MAXEN ELECTRONICS LIMITED			
方向			公司编号	HCT1622GG133A1-V0	未注公差	±0.20
绘图	审核	日期	客户编号	单位	mm	
		20211224	版本号	比例	1 : 1	

1

2

3

4

5

6