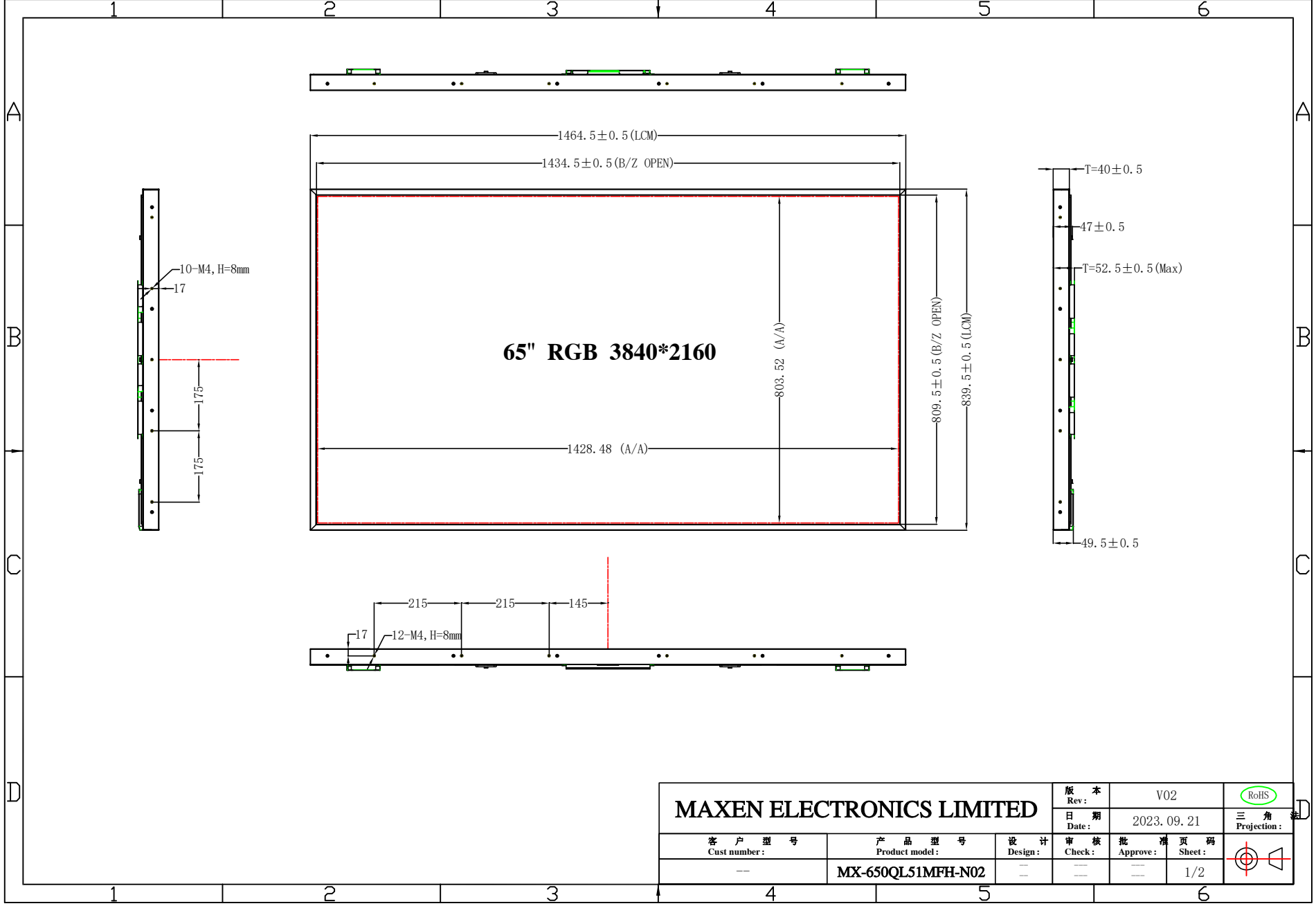
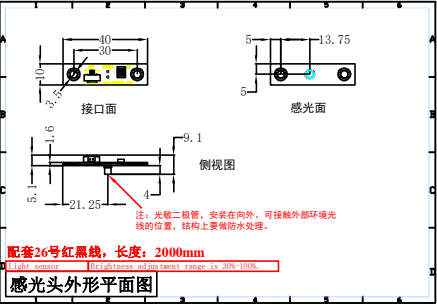
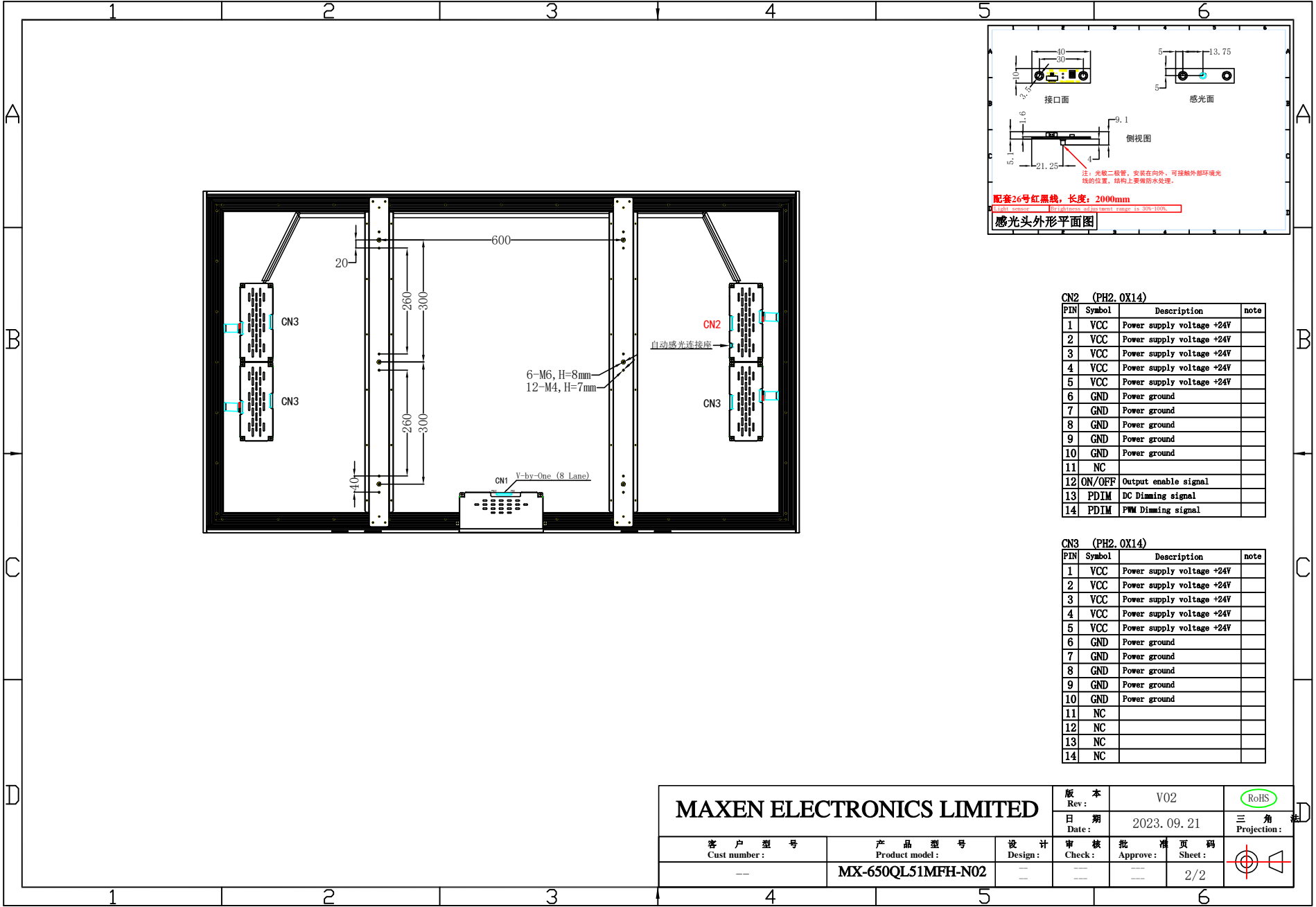


6. Mechanical Dimension



<b>MAXEN ELECTRONICS LIMITED</b>				版本 Rev:	V02	RoHS
				日期 Date:	2023.09.21	
客户型号 Cust number:	产品型号 Product model:	设计 Design:	审核 Check:	批准 Approve:	页码 Sheet:	
--	MX-650QL51MFH-N02	--	--	--	1/2	



CN2 (PH2, 0X14)			
PIN	Symbol	Description	note
1	VCC	Power supply voltage +24V	
2	VCC	Power supply voltage +24V	
3	VCC	Power supply voltage +24V	
4	VCC	Power supply voltage +24V	
5	VCC	Power supply voltage +24V	
6	GND	Power ground	
7	GND	Power ground	
8	GND	Power ground	
9	GND	Power ground	
10	GND	Power ground	
11	NC		
12	ON/OFF	Output enable signal	
13	PDIM	DC Dimming signal	
14	PDIM	PWM Dimming signal	

CN3 (PH2, 0X14)			
PIN	Symbol	Description	note
1	VCC	Power supply voltage +24V	
2	VCC	Power supply voltage +24V	
3	VCC	Power supply voltage +24V	
4	VCC	Power supply voltage +24V	
5	VCC	Power supply voltage +24V	
6	GND	Power ground	
7	GND	Power ground	
8	GND	Power ground	
9	GND	Power ground	
10	GND	Power ground	
11	NC		
12	NC		
13	NC		
14	NC		

MAXEN ELECTRONICS LIMITED			版本	V02	RoHS
			日期	2023.09.21	三角
客户型号	产品型号	设计	审核	批准	页码
Cust number:	Product model:	Design:	Check:	Approve:	Sheet:
--	MX-650QL51MFH-N02	--	--	--	2/2