
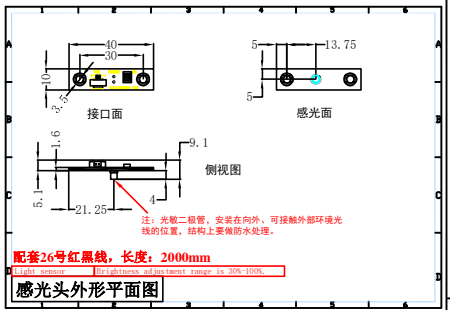
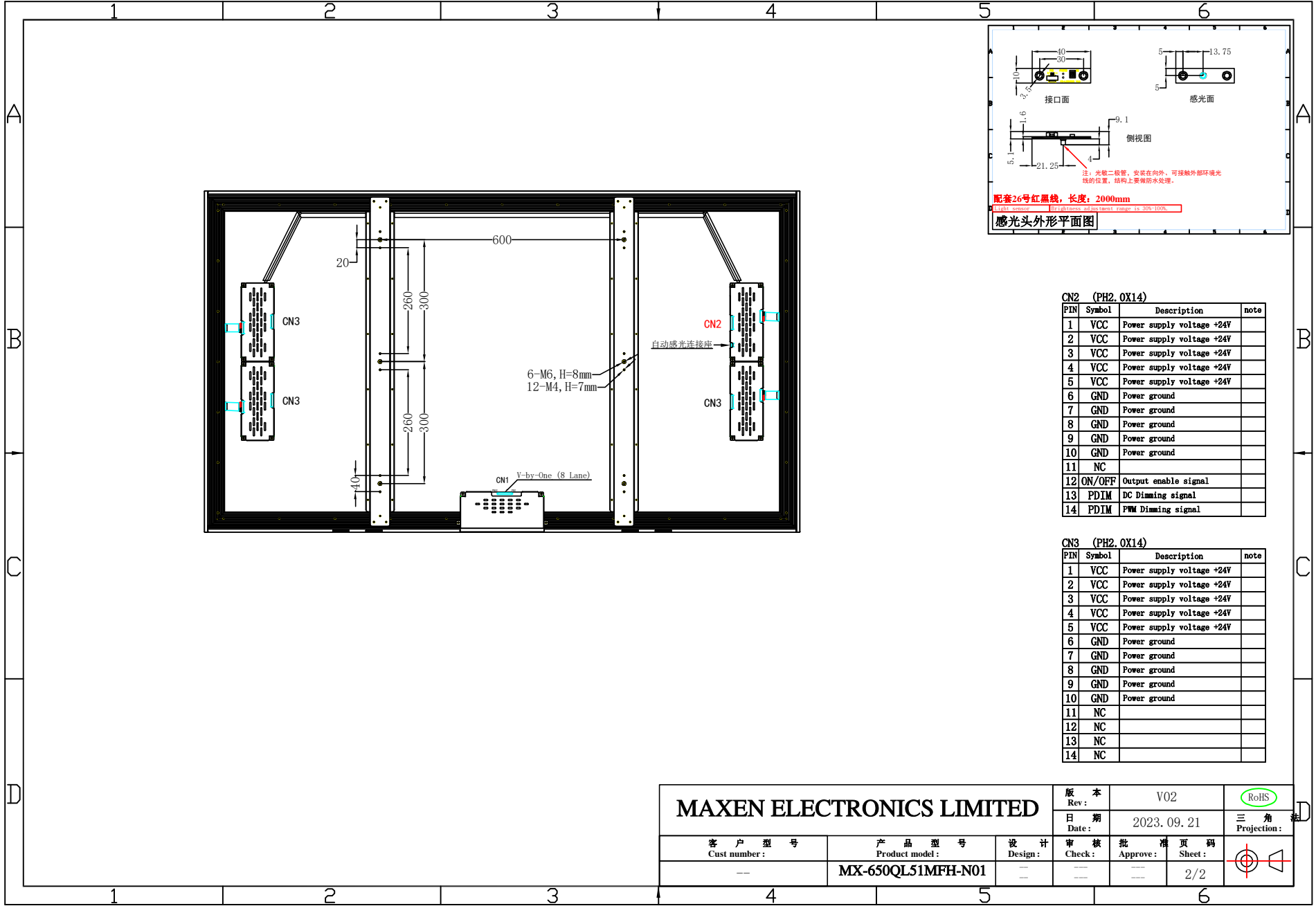


MAXEN ELECTRONICS LIMITED				版本 Rev:	V02	RoHS
				日期 Date:	2023.09.21	
客户型号 Cust number:	产品型号 Product model:	设计 Design:	审核 Check:	批准 Approve:	页码 Sheet:	
--	MX-650QL51MFH-N01	--	--	--	1/2	



CN2 (PH2, 0X14)

PIN	Symbol	Description	note
1	VCC	Power supply voltage +24V	
2	VCC	Power supply voltage +24V	
3	VCC	Power supply voltage +24V	
4	VCC	Power supply voltage +24V	
5	VCC	Power supply voltage +24V	
6	GND	Power ground	
7	GND	Power ground	
8	GND	Power ground	
9	GND	Power ground	
10	GND	Power ground	
11	NC		
12	ON/OFF	Output enable signal	
13	PDIM	DC Dimming signal	
14	PDIM	PWM Dimming signal	

CN3 (PH2, 0X14)

PIN	Symbol	Description	note
1	VCC	Power supply voltage +24V	
2	VCC	Power supply voltage +24V	
3	VCC	Power supply voltage +24V	
4	VCC	Power supply voltage +24V	
5	VCC	Power supply voltage +24V	
6	GND	Power ground	
7	GND	Power ground	
8	GND	Power ground	
9	GND	Power ground	
10	GND	Power ground	
11	NC		
12	NC		
13	NC		
14	NC		

MAXEN ELECTRONICS LIMITED			版本 Rev:	V02	RoHS
			日期 Date:	2023.09.21	三角 Projection:
客户型号 Cust number:	产品型号 Product model:	设计 Design:	审核 Check:	批准 Approve:	页码 Sheet:
--	MX-650QL51MFH-N01	--	--	--	2/2