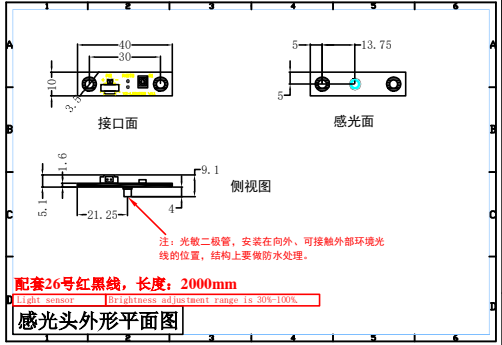
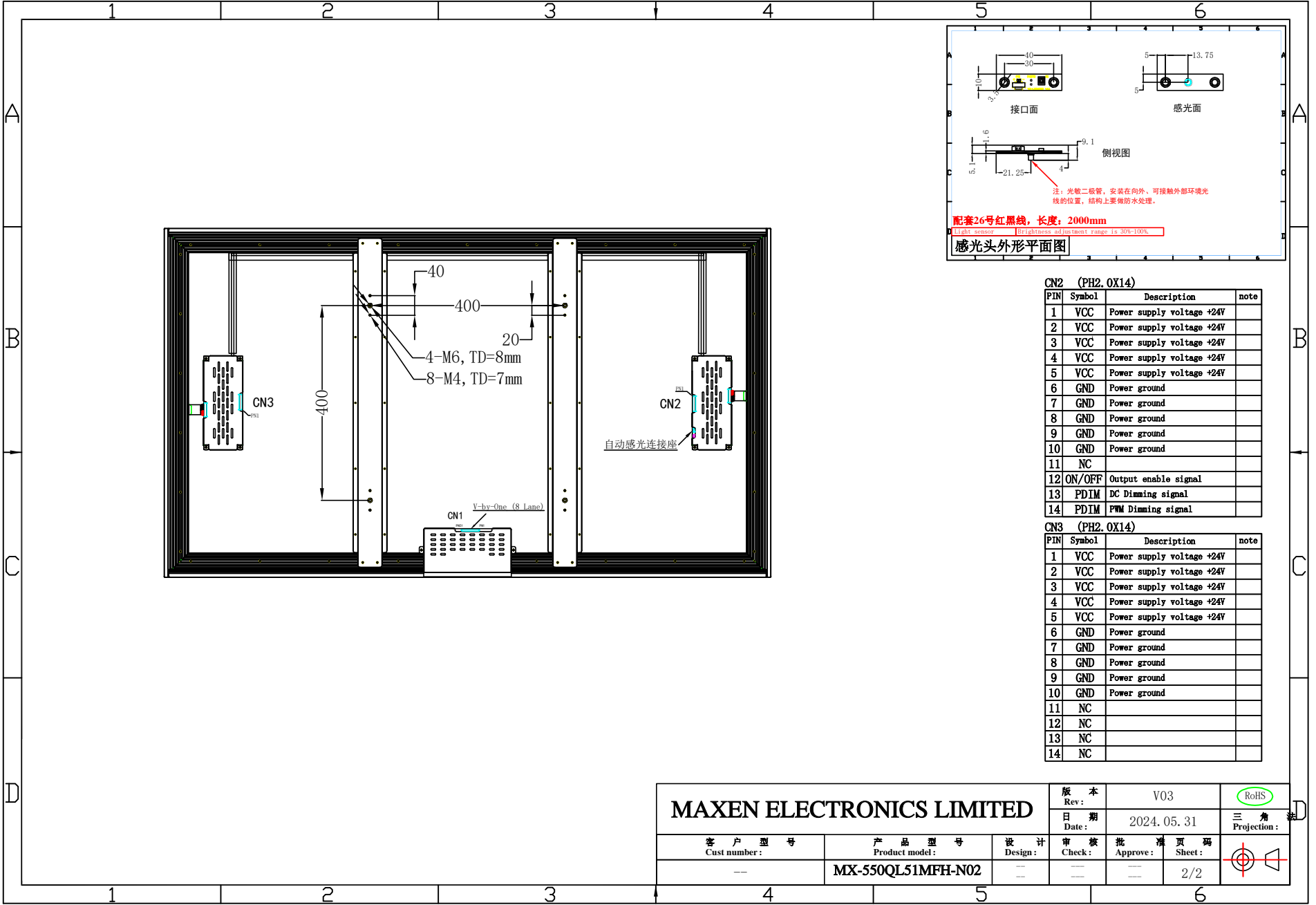


**MAXEN ELECTRONICS LIMITED**

客户型号 Cust number:		产品型号 Product model:		设计 Design:	审核 Check:	批准 Approve:	页码 Sheet:	版本 Rev:	日期 Date:	RoHS	投影 Projection:
--		MX-550QL51MFH-N02		--	--	--	1/2	V03	2024.05.31	RoHS	三 角



CN2 (PH2.0X14)				
PIN	Symbol	Description	note	
1	VCC	Power supply voltage +24V		
2	VCC	Power supply voltage +24V		
3	VCC	Power supply voltage +24V		
4	VCC	Power supply voltage +24V		
5	VCC	Power supply voltage +24V		
6	GND	Power ground		
7	GND	Power ground		
8	GND	Power ground		
9	GND	Power ground		
10	GND	Power ground		
11	NC			
12	ON/OFF	Output enable signal		
13	PDIM	DC Dimming signal		
14	PDIM	PWM Dimming signal		

CN3 (PH2.0X14)				
PIN	Symbol	Description	note	
1	VCC	Power supply voltage +24V		
2	VCC	Power supply voltage +24V		
3	VCC	Power supply voltage +24V		
4	VCC	Power supply voltage +24V		
5	VCC	Power supply voltage +24V		
6	GND	Power ground		
7	GND	Power ground		
8	GND	Power ground		
9	GND	Power ground		
10	GND	Power ground		
11	NC			
12	NC			
13	NC			
14	NC			

<b>MAXEN ELECTRONICS LIMITED</b>				版本 Rev:	V03	RoHS
				日期 Date:	2024.05.31	
客户型号 Cust number:	产品型号 Product model:	设计 Design:	审核 Check:	批准 Approve:	页码 Sheet:	
---	MX-550QL51MFH-N02	---	---	---	2/2	