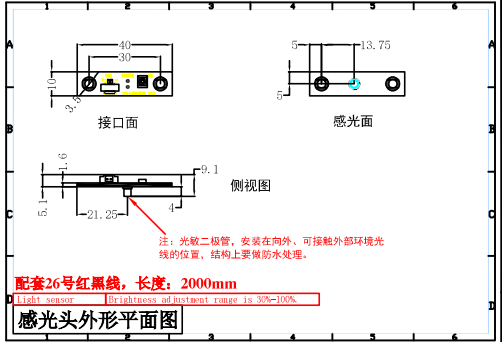
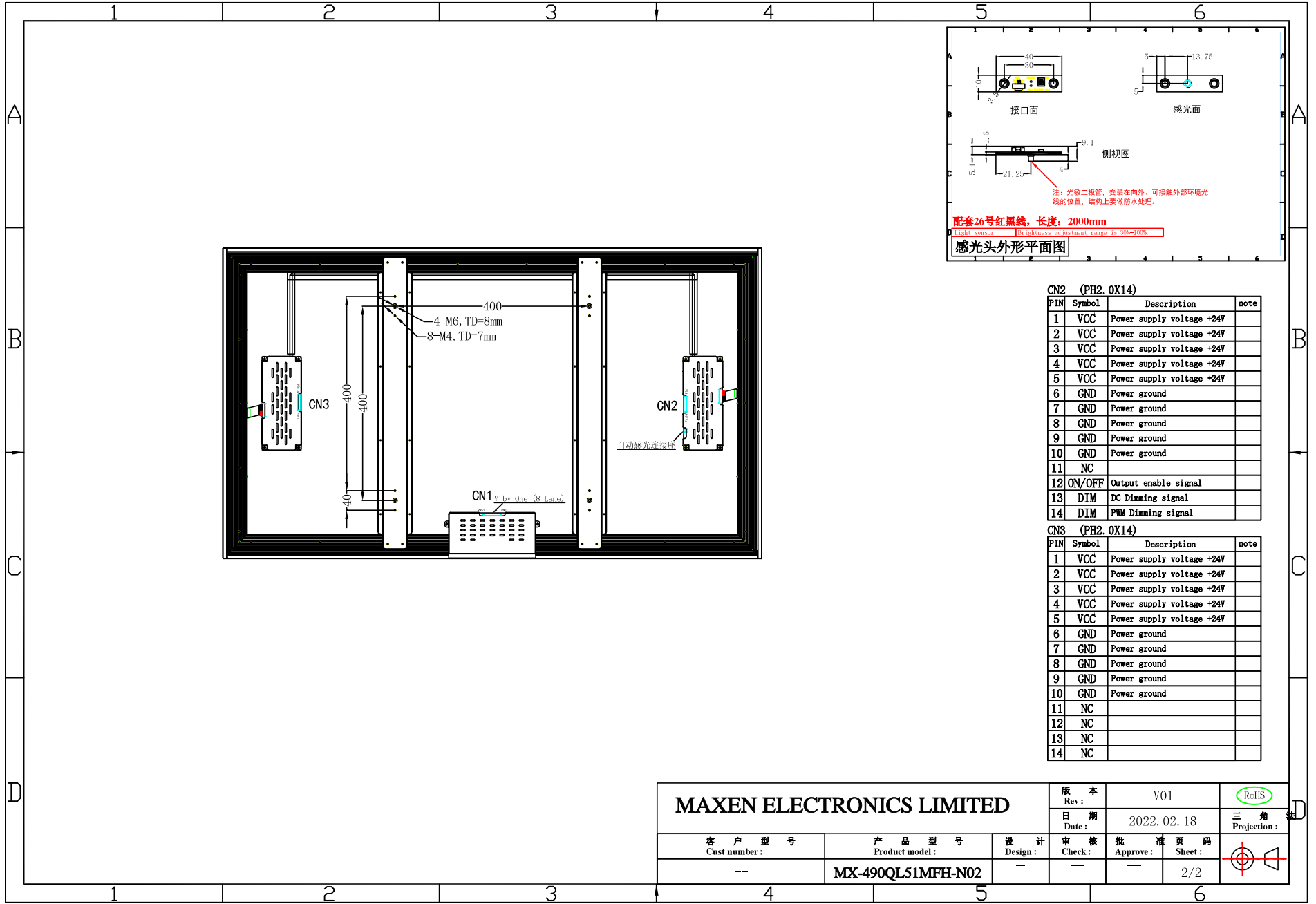


<b>MAXEN ELECTRONICS LIMITED</b>				版本	V01	RoHS
				Rev:		
				日期	2022.02.18	三角
				Date:		Projection:
客户型号	产品型号	设计	审核	批准	页码	
Cust number:	Product model:	Design:	Check:	Approve:	Sheet:	
--	MX-490QL51MFH-N02	--	--	--	1/2	



**CN2 (PH2, 0X14)**

PIN	Symbol	Description	note
1	VCC	Power supply voltage +24V	
2	VCC	Power supply voltage +24V	
3	VCC	Power supply voltage +24V	
4	VCC	Power supply voltage +24V	
5	VCC	Power supply voltage +24V	
6	GND	Power ground	
7	GND	Power ground	
8	GND	Power ground	
9	GND	Power ground	
10	GND	Power ground	
11	NC		
12	ON/OFF	Output enable signal	
13	DIM	DC Dimming signal	
14	DIM	PWM Dimming signal	

**CN3 (PH2, 0X14)**

PIN	Symbol	Description	note
1	VCC	Power supply voltage +24V	
2	VCC	Power supply voltage +24V	
3	VCC	Power supply voltage +24V	
4	VCC	Power supply voltage +24V	
5	VCC	Power supply voltage +24V	
6	GND	Power ground	
7	GND	Power ground	
8	GND	Power ground	
9	GND	Power ground	
10	GND	Power ground	
11	NC		
12	NC		
13	NC		
14	NC		

<b>MAXEN ELECTRONICS LIMITED</b>				版本 Rev:	V01	
				日期 Date:	2022.02.18	三角 Projection:
客户型号 Cust number:	产品型号 Product model:	设计 Design:	审核 Check:	批准 Approve:	页码 Sheet:	
--	MX-490QL51MFH-N02	--	--	--	2/2	