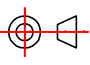
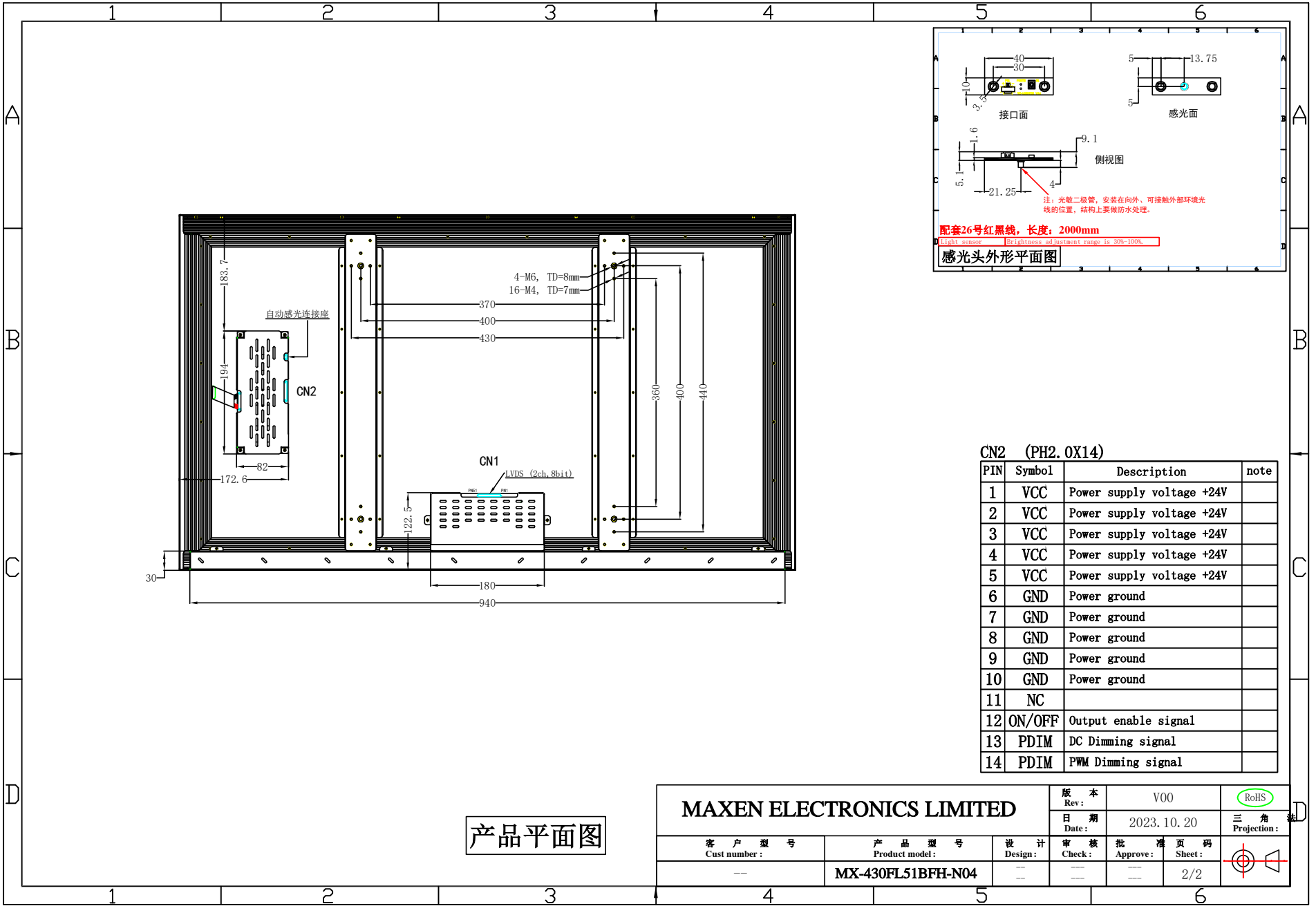
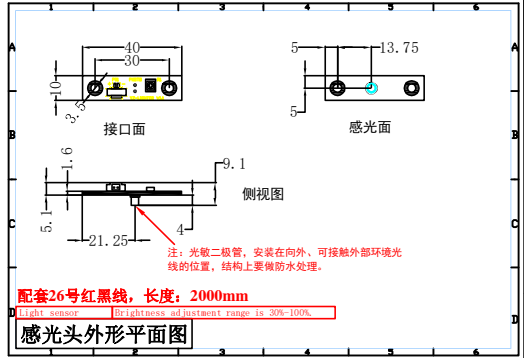


MAXEN ELECTRONICS LIMITED				版本 Rev :	V00	RoHS
				日期 Date :	2023. 10. 20	三角 Projection :
客户型号 Cust number :	产品型号 Product model :	设计 Design :	审核 Check :	批准 Approve :	页码 Sheet :	
---	MX-430FL51BFH-N04	---	---	---	1/2	



产品平面图



CN2 (PH2.0X14)

PIN	Symbol	Description	note
1	VCC	Power supply voltage +24V	
2	VCC	Power supply voltage +24V	
3	VCC	Power supply voltage +24V	
4	VCC	Power supply voltage +24V	
5	VCC	Power supply voltage +24V	
6	GND	Power ground	
7	GND	Power ground	
8	GND	Power ground	
9	GND	Power ground	
10	GND	Power ground	
11	NC		
12	ON/OFF	Output enable signal	
13	PDIM	DC Dimming signal	
14	PDIM	PWM Dimming signal	

MAXEN ELECTRONICS LIMITED				版本 Rev:	V00	
				日期 Date:	2023. 10. 20	三角 Projection:
客户型号 Cust number:	产品型号 Product model:	设计 Design:	审核 Check:	批准 Approve:	页码 Sheet:	
---	MX-430FL51BFH-N04	---	---	---	2/2	