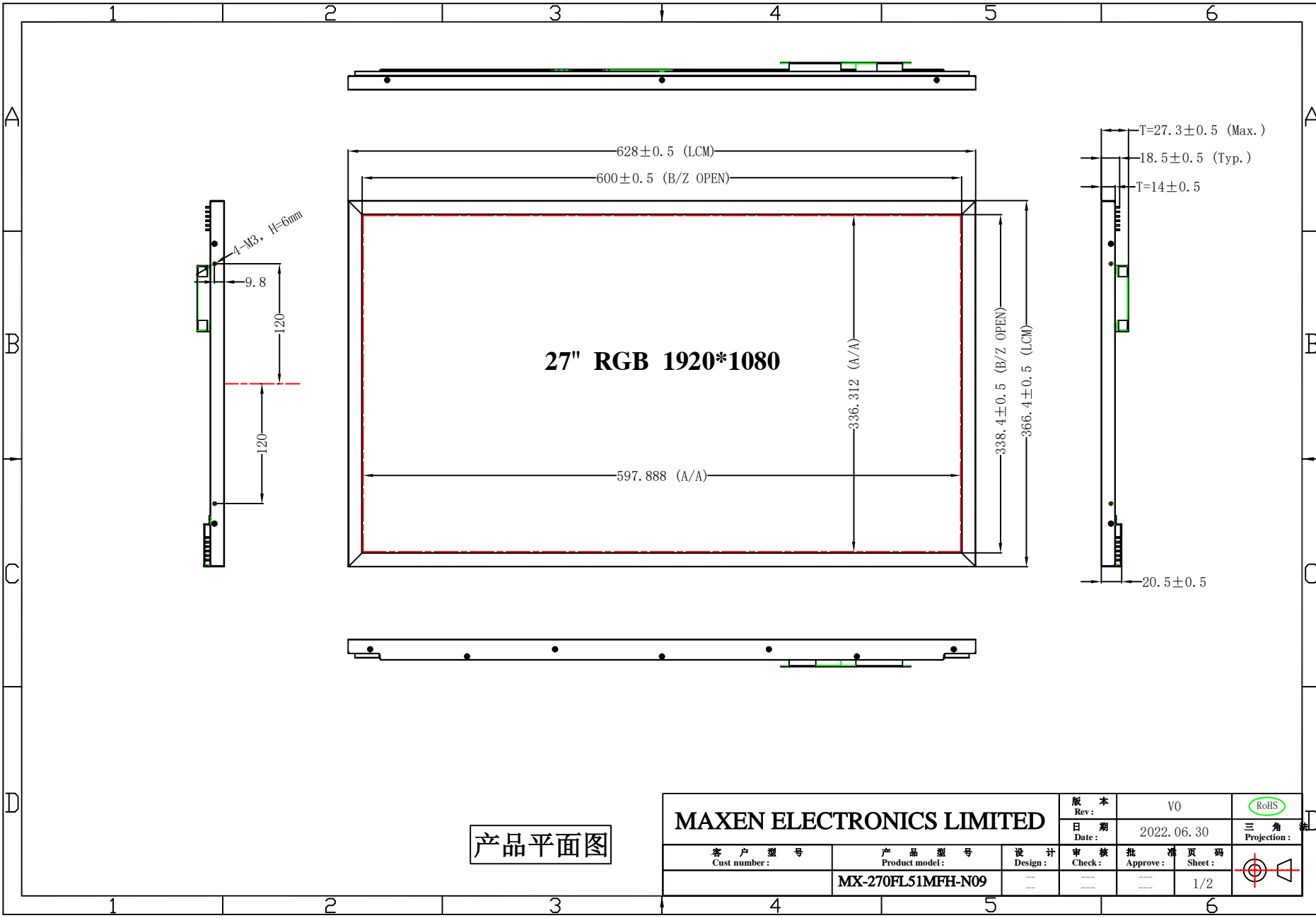
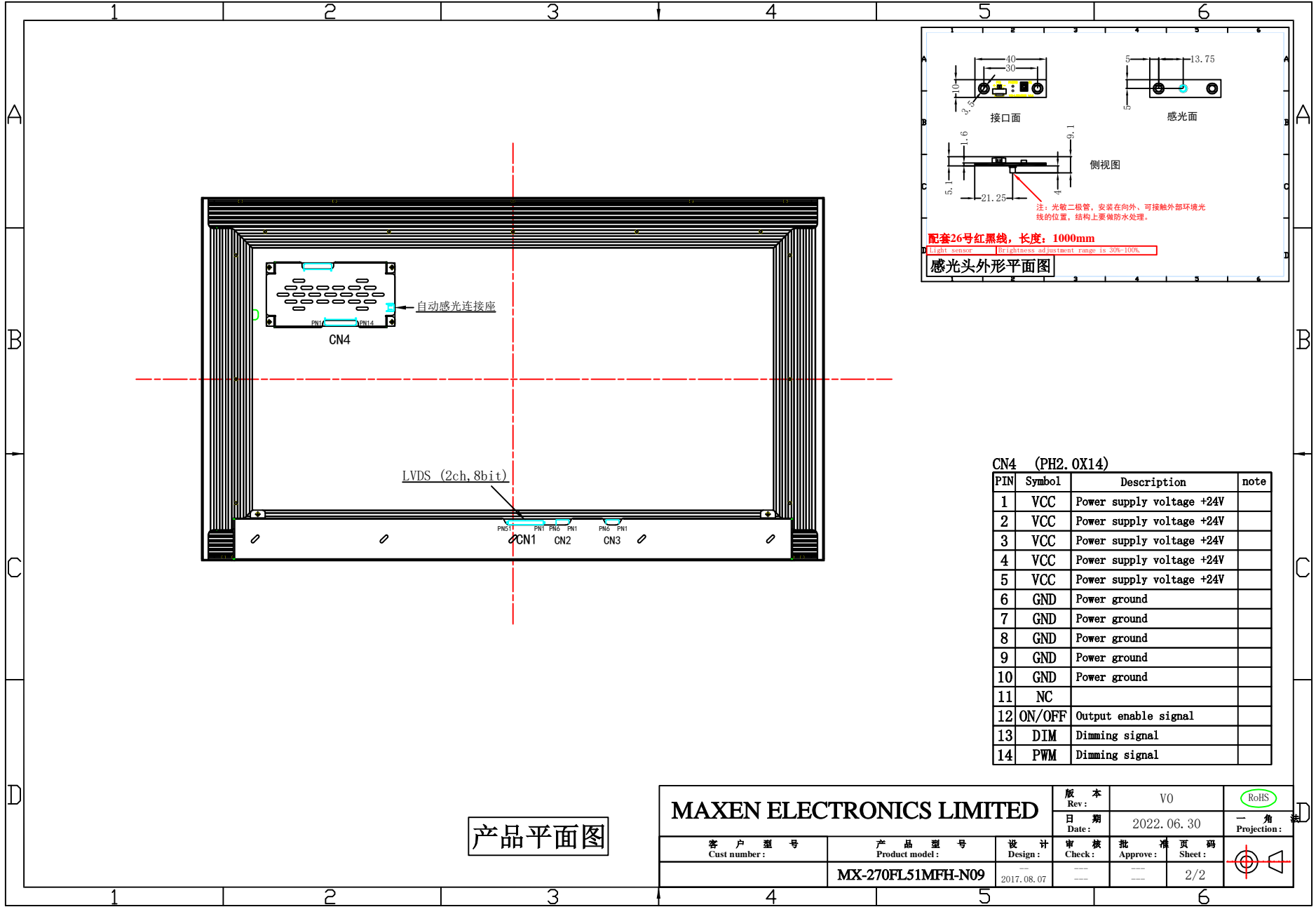


6. Mechanical Dimension



产品平面图

MAXEN ELECTRONICS LIMITED				版本 Rev:	V0	RoHS
				日期 Date:	2022.06.30	三角 Projection:
客户型号 Cust number:	产品型号 Product model:	设计 Design:	审核 Check:	批准 Approve:	页码 Sheet:	
	MX-270FL51MFH-N09	--	--	--	1/2	



产品平面图

CN4 (PH2, 0X14)			
PIN	Symbol	Description	note
1	VCC	Power supply voltage +24V	
2	VCC	Power supply voltage +24V	
3	VCC	Power supply voltage +24V	
4	VCC	Power supply voltage +24V	
5	VCC	Power supply voltage +24V	
6	GND	Power ground	
7	GND	Power ground	
8	GND	Power ground	
9	GND	Power ground	
10	GND	Power ground	
11	NC		
12	ON/OFF	Output enable signal	
13	DIM	Dimming signal	
14	PWM	Dimming signal	

MAXEN ELECTRONICS LIMITED			版 本 Rev: V0	RoHS
			日 期 Date: 2022.06.30	一 角 Projection:
客 户 型 号 Cust number:	产 品 型 号 Product model:	设 计 Design:	审 核 Check:	批 准 页 码 Approve: Sheet:
	MX-270FL51MFH-N09	2017.08.07		2/2