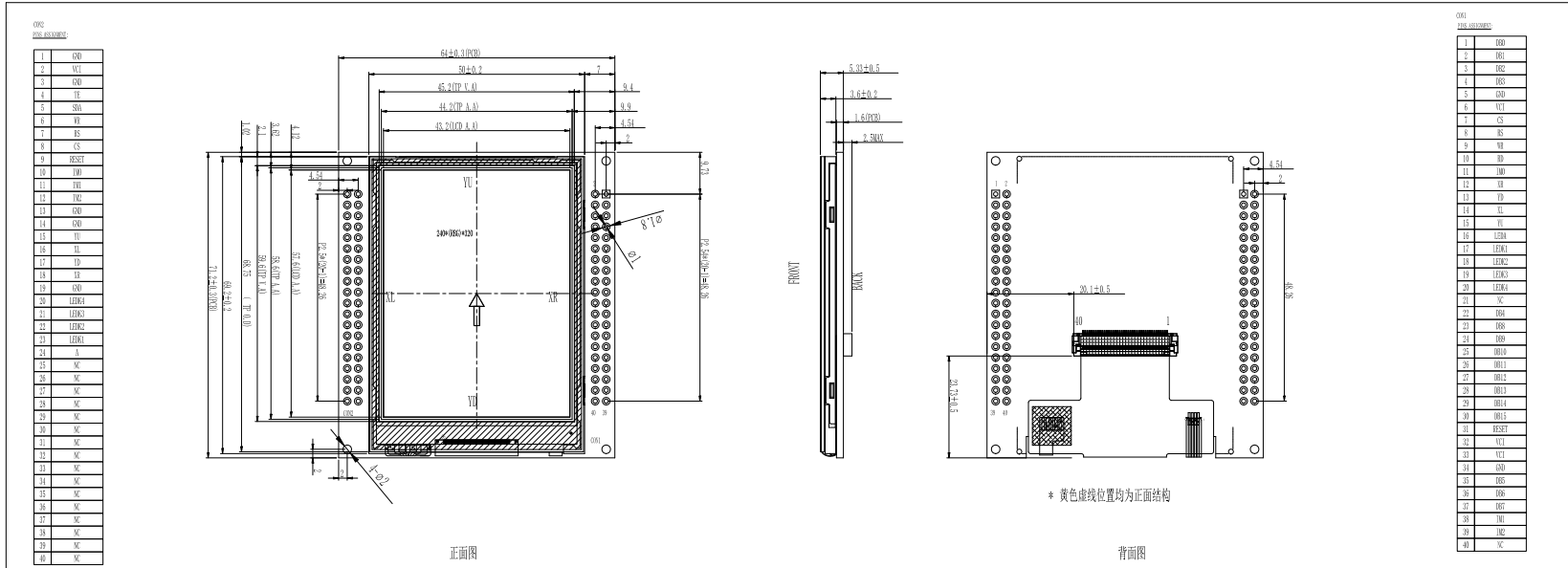
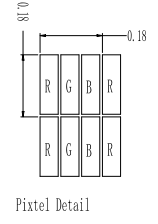
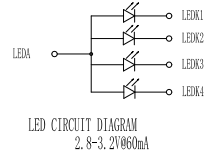


Mechanical Drawing



The MCU interface mode select

DM2	DM1	DM0	MCU Interface Mode	Data pin
0	0	0	80-8bit parallel 1/F	DD[7:0]
0	0	1	80-16bit parallel 1/F	DD[15:0]
1	0	1	3-line 9bit serial 1/F	SDx:in/out
1	1	0	4-line 9bit serial 1/F	SDx:in/out



Display Type	TFT
Optimum Viewing Direction	TRANSMISSIVE_POSITIVE
Upper Polarizer Type	6 O' CLOCK
Upper Polarizer Type	Anti-Glare
LED Driver IC	ST7789V(-G)-A
Operating Voltage	VCC=2.8V
Operation Temperature	-20° C TO 70° C
Storage Temperature	-30° C TO 80° C
Interface	SPI
Backlight	4-CHIP WHITE LED
Surface luminance	200 cd/m ² (TYP.)
White X/Y	-

- NOTES:
 1. General Tolerance: ±0.2
 2. () reference dimension.
 3. DIMS MUST BE COMPLIANT

				DRAWN			TITLE	DRAWING NO.		
				ME. CHECKED			MX-T280MCQS-34P-B			
				EE. CHECKED			UNIT	m	SCALE	PET
				APPROVED			3rd angle		SHEET	OF 1 1
VO1		Modify the pin assignment		2022.07.22B			MAXEN ELECTRONICS LIMITED			
VO0		First issue		2022.07.12A	CUSTOMER'S APPROVAL					
VER.	SYNDOL	AMENDMENT	SIGN	DATE						

MAXEN ELECTRONICS LIMITED
 Email: info@maxen-lcddisplay.com Https:// www.maxen-lcddisplay.com