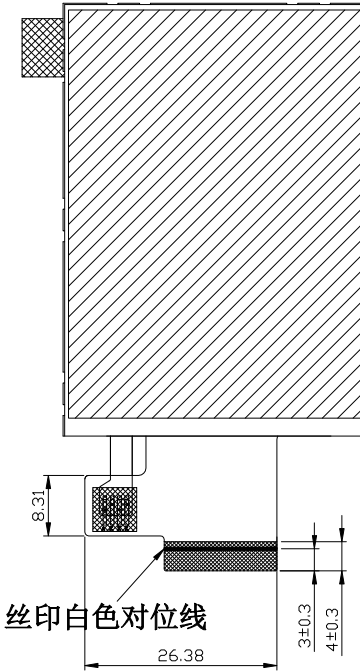
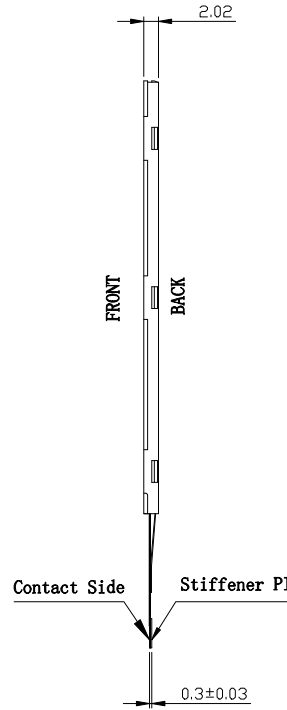
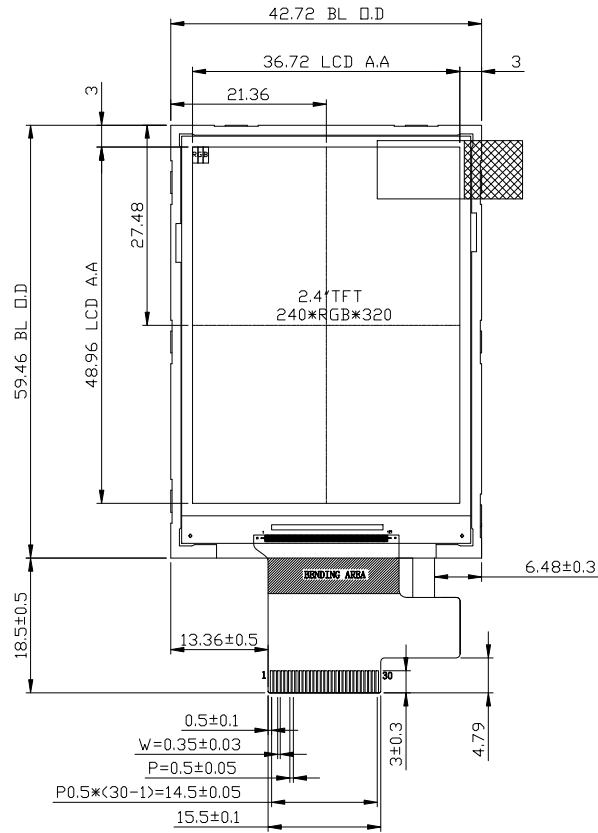


PIN ASSIGNMENT:

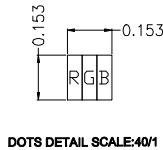
PIN	SYMBOL
1	VCC
2	LEDK
3	LEDA
4	RESET
5	CS
6	RS
7	WR
8	RD
9	DB0
10	DB1
11	DB2
12	DB3
13	DB4
14	DB5
15	DB6
16	DB7
17	DB8
18	DB9
19	DB10
20	DB11
21	DB12
22	DB13
23	DB14
24	DB15
25	IMO
26	GND
27	GND
28	GND
29	GND
30	GND



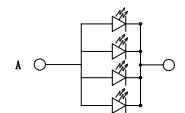
FPC 展开出货

NOTES:

1. General Tolerance: ±0.2;
2. ( ) reference dimension;
3. RoHS must be compliant;
4. IMO=0,8-bit MCU; IMO=1,16-bit MCU;
5. 全球专利LED (含日本地区) 谷麦 (GMA) 型号: 3806;
6. 偏光片不能含有UV-328.



LED CIRCUIT DIAGRAM:



2.8~3.4V@If=80mA

Display Type	TFT, TRANSMISSIVE
	NORMALLY BLACK
Viewing Angle	ALL
Upper Polarizer Type	Glare(without UV328)
LCD Driver IC	ST7789T3-C4-1
Operating Voltage	VCC=2.8V
Operation Temperature	-20°C TO 70°C
Storage Temperature	-30°C TO 80°C
Interface	8/16-bit MCU
Backlight	4-CHIPS WHITE LED
Surface luminance	350cd/m <sup>2</sup> (TYP.)
White X/Y	--

					DRAWN	MZH 20230523	TITLE	DRAWING NO.			
					ME.CHECKED	DENG 20230524	MODULE SPEC.	MX-T240MHQS-28			
					EE.CHECKED	LBL 20230524		UNIT	mm	SCALE	FIT
					APPROVED			3rd Angle		SHEET 1 OF 1	
V00		First Issue		MZH	2023.05.23A	CUSTOMER'S APPROVAL	MAXEN ELECTRONICS LIMITED				
VER.	SYMBOL	AMENDMENT		SIGN	DATE						