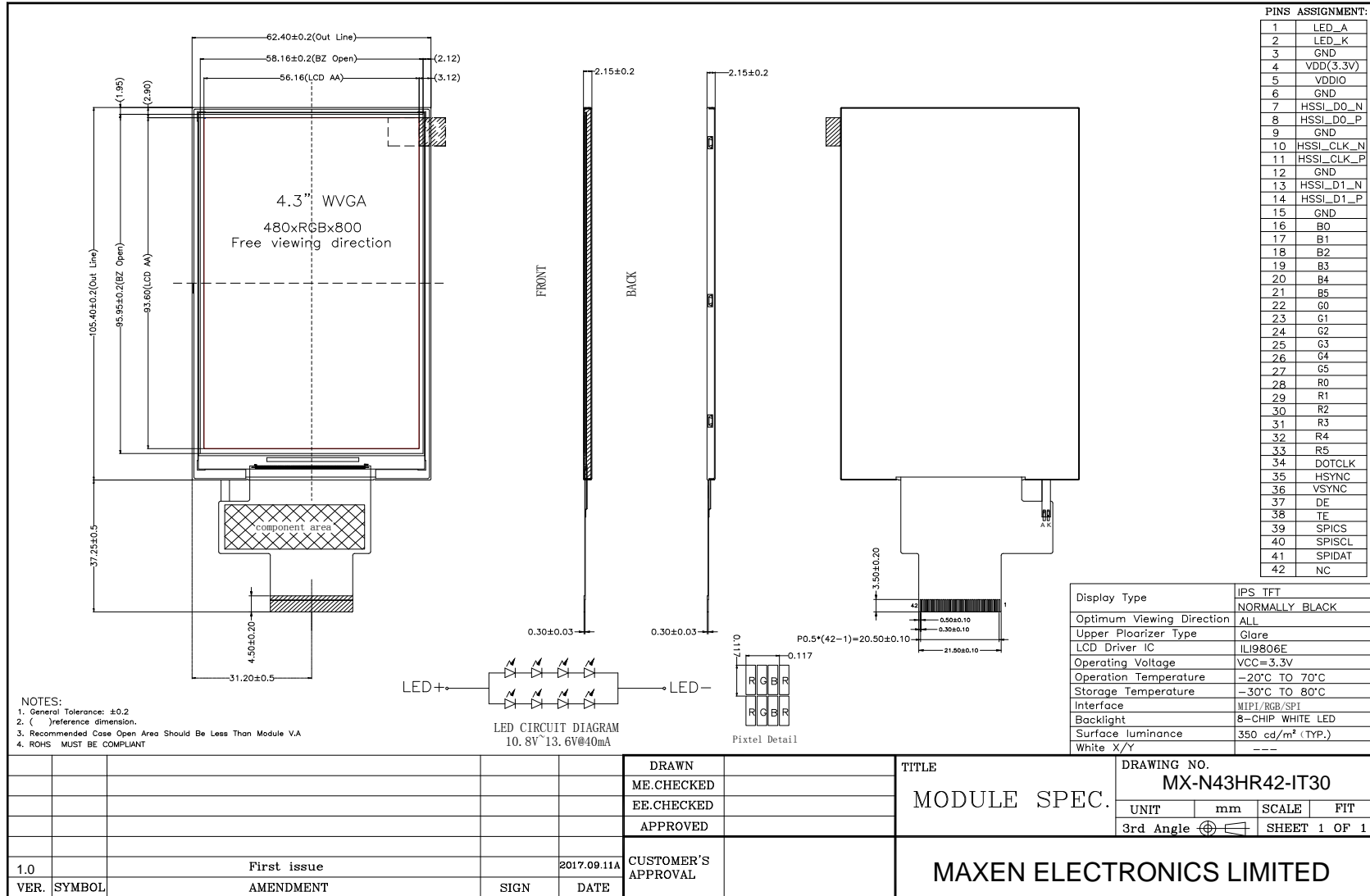


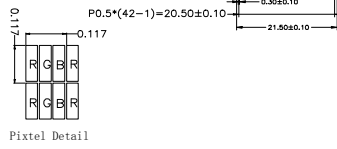
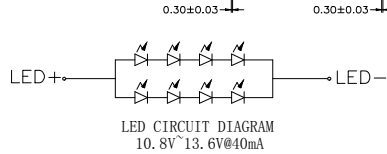
Mechanical Drawing



MX-N43HR42-IT30



- NOTES:
 1. General Tolerance: ±0.2
 2. () reference dimension.
 3. Recommended Case Open Area Should Be Less Than Module V.A
 4. ROHS MUST BE COMPLIANT



Display Type	JPS TFT
Optimum Viewing Direction	NORMALLY BLACK
Upper Polarizer Type	Glare
LCD Driver IC	ILI9806E
Operating Voltage	VCC=3.3V
Operation Temperature	-20°C TO 70°C
Storage Temperature	-30°C TO 80°C
Interface	MIPI/RGB/SPi
Backlight	8-CHIP WHITE LED
Surface luminance	350 cd/m ² (TYP.)
White X/Y	---

				DRAWN	TITLE		DRAWING NO.	
				ME.CHECKED	MODULE SPEC.		MX-N43HR42-IT30	
				EE.CHECKED			UNIT	mm
				APPROVED			SCALE	FIT
				CUSTOMER'S APPROVAL			3rd Angle	SHEET 1 OF 1
1.0	First issue		2017.09.11A	MAXEN ELECTRONICS LIMITED				
VER.	SYMBOL	AMENDMENT	SIGN	DATE				

MAXEN ELECTRONICS LIMITED
 Email: info@maxen-lcdsdisplay.com Https:// www.maxen-lcdsdisplay.com