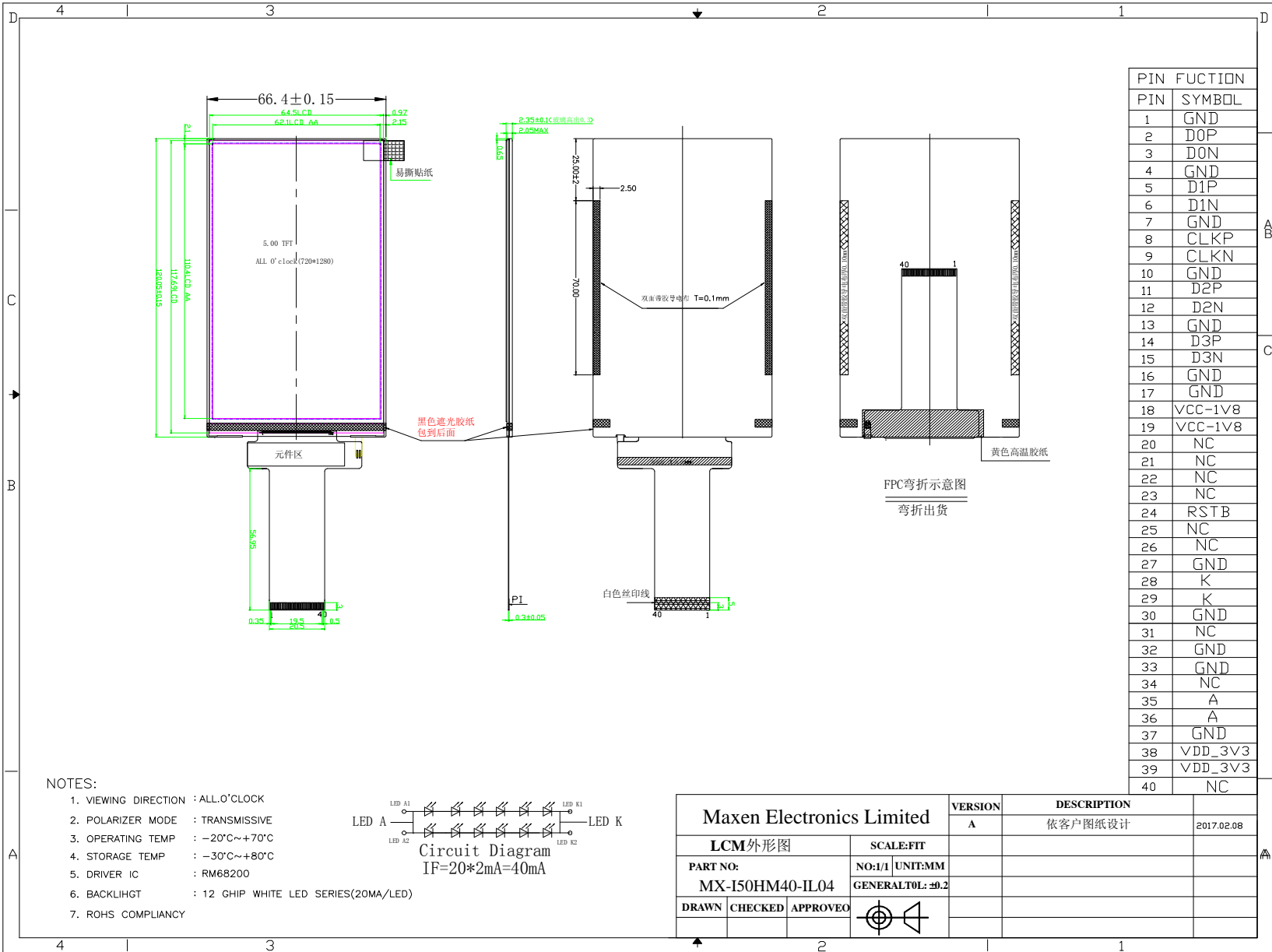


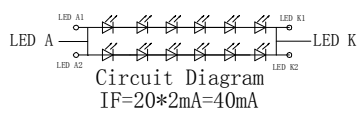
MAXEN ELECTRONICS LIMITED

Email: melody.xia@maxen-leddisplay.com Https:// www.maxen-leddisplay.com



PIN FUCTION	
PIN	SYMBOL
1	GND
2	D0P
3	D0N
4	GND
5	D1P
6	D1N
7	GND
8	CLKP
9	CLKN
10	GND
11	D2P
12	D2N
13	GND
14	D3P
15	D3N
16	GND
17	GND
18	VCC-1V8
19	VCC-1V8
20	NC
21	NC
22	NC
23	NC
24	RSTB
25	NC
26	NC
27	GND
28	K
29	K
30	GND
31	NC
32	GND
33	GND
34	NC
35	A
36	A
37	GND
38	VDD_3V3
39	VDD_3V3
40	NC

- NOTES:
- VIEWING DIRECTION : ALL 0° CLOCK
 - POLARIZER MODE : TRANSMISSIVE
 - OPERATING TEMP : $-20^{\circ}\text{C} \sim +70^{\circ}\text{C}$
 - STORAGE TEMP : $-30^{\circ}\text{C} \sim +80^{\circ}\text{C}$
 - DRIVER IC : RM68200
 - BACKLIHGT : 12 GHIP WHITE LED SERIES(20mA/LED)
 - ROHS COMPLIANCY

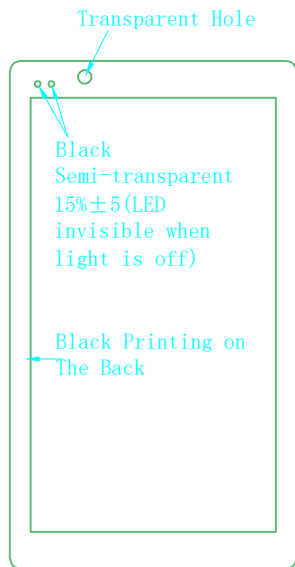


Maxen Electronics Limited			VERSION	DESCRIPTION	
			A	依客户图纸设计	2017.02.08
LCM外形图		SCALE:FIT			
PART NO: MX-150HM40-IL04		NO:1/1	UNIT:MM		
		GENERAL TOL: ± 0.2			
DRAWN	CHECKED	APPROVED			

客户签名:

日期:

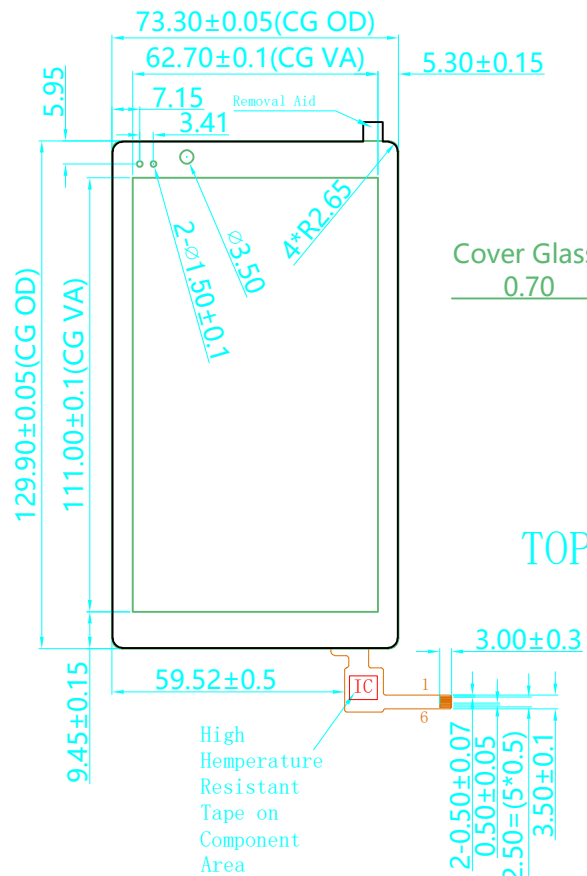
Cover Glass



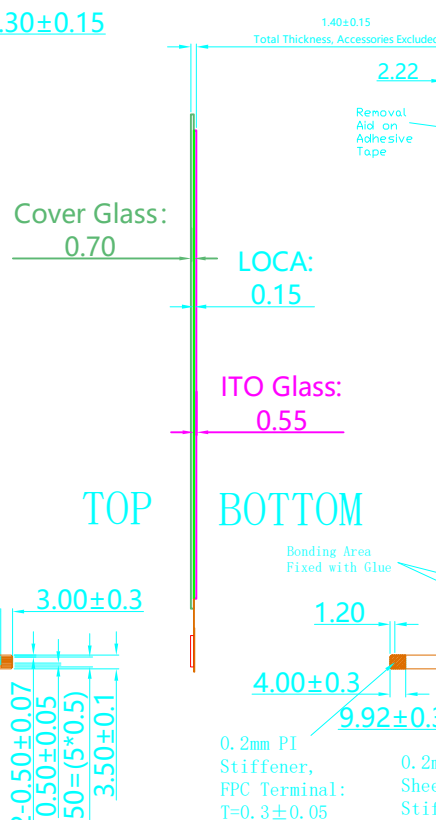
Technical Parameters:

- CG+ITO GLASS+FPC
CG: 0.7mm Asahi Glass
GLASS sensor: 0.55mm
Total Thickness: 1.4±0.15
IC: GT911(10*15)
- Operating Voltage: 2.8V~3.3 V
- Transparent: ≥85%
- Hardness: 6H
- Operating Temperature: -10℃~+60℃, ≤90%RH
- Storage Temperature: -20℃~+70℃, ≤90%RH
- Unmarked Tolerance: ±0.2

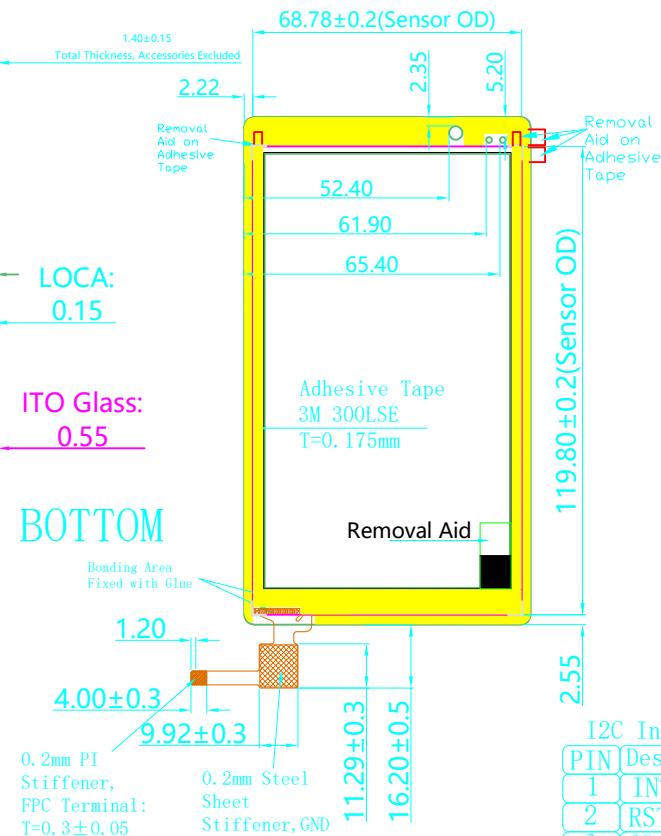
Front View



Side View



Back View



(G+G Structure)

I2C Interface

PIN	Description
1	INT(1.8V)
2	RST(1.8V)
3	SDA(1.8V)
4	SCL(1.8V)
5	GND
6	VDD(2.8V)

物料

NO.

更改内容

日期

工程确认图

MAXEN Electronics Limited

方向



公司编号

HCT1022GG050A1-V1

未注公差

±0.20

绘图

审核

日期

客户编号

单位

mm

20210413

版本号

比例

1 : 1

1

2

3

4

5

6