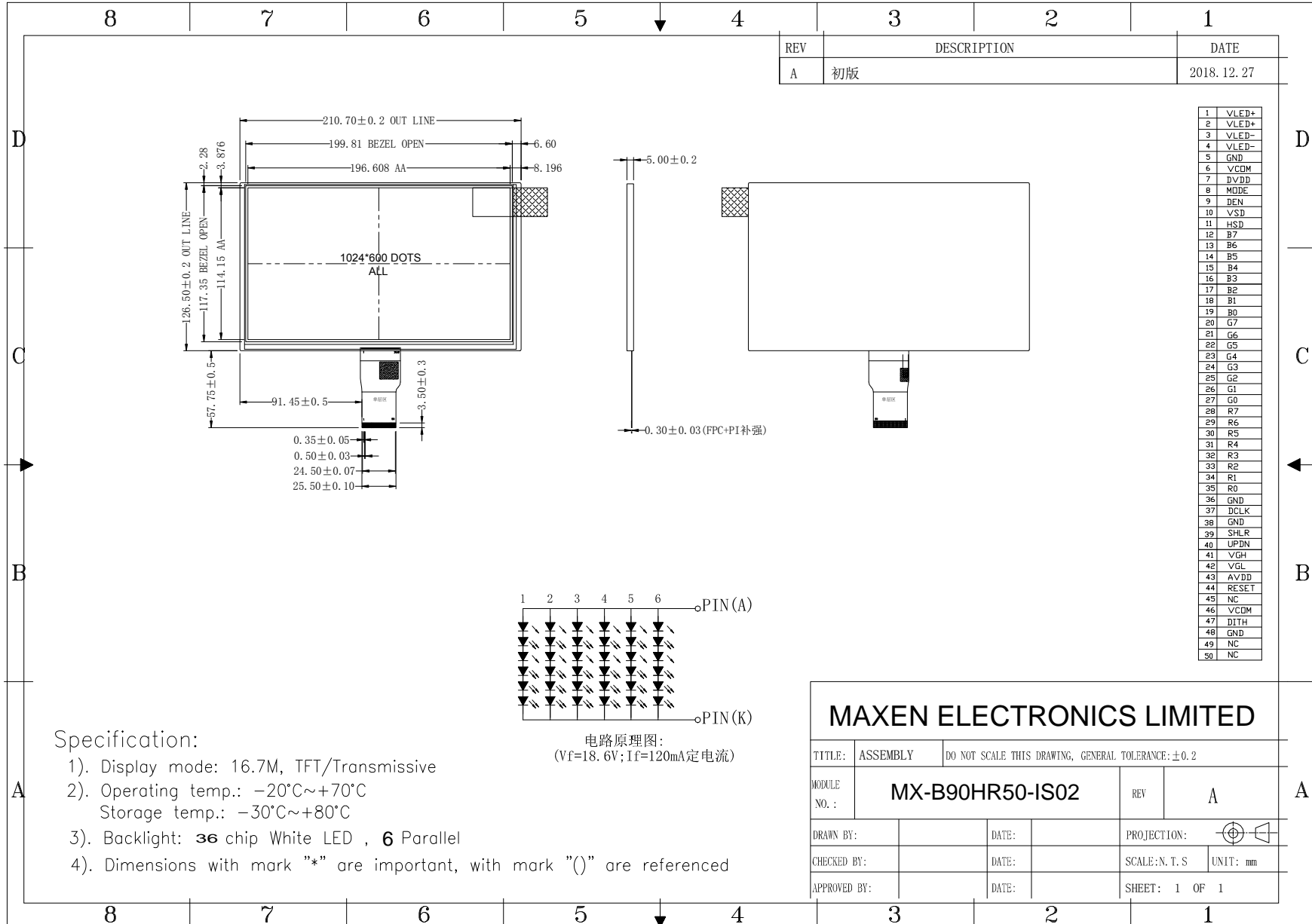


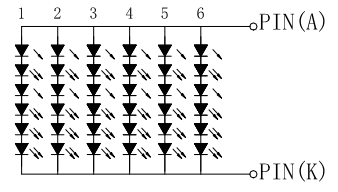
Outline Drawing

MX-B90HR50-IS02



REV	DESCRIPTION	DATE
A	初版	2018.12.27

1	VLED+
2	VLED+
3	VLED-
4	VLED-
5	GND
6	VCOM
7	DVDD
8	MODE
9	BEN
10	VSD
11	HSD
12	B7
13	B6
14	B5
15	B4
16	B3
17	B2
18	B1
19	B0
20	G7
21	G6
22	G5
23	G4
24	G3
25	G2
26	G1
27	G0
28	R7
29	R6
30	R5
31	R4
32	R3
33	R2
34	R1
35	R0
36	GND
37	DCLK
38	GND
39	SHLR
40	UPDN
41	VGH
42	VGL
43	AVDD
44	RESET
45	NC
46	VCOM
47	DITH
48	GND
49	NC
50	NC



电路原理图:
(Vf=18.6V; If=120mA定电流)

- Specification:
- 1). Display mode: 16.7M, TFT/Transmissive
 - 2). Operating temp.: -20°C~+70°C
Storage temp.: -30°C~+80°C
 - 3). Backlight: **36** chip White LED , **6** Parallel
 - 4). Dimensions with mark "*" are important, with mark "()" are referenced

MAXEN ELECTRONICS LIMITED			
TITLE:	ASSEMBLY	DO NOT SCALE THIS DRAWING, GENERAL TOLERANCE: ±0.2	
MODULE NO.:	MX-B90HR50-IS02	REV	A
DRAWN BY:		DATE:	
CHECKED BY:		DATE:	
APPROVED BY:		DATE:	
PROJECTION:		UNIT: mm	
SHEET: 1 OF 1			

MAXEN ELECTRONICS LIMITED
 Email: info@maxen-lcddisplay.com Https:// www.maxen-lcddisplay.com