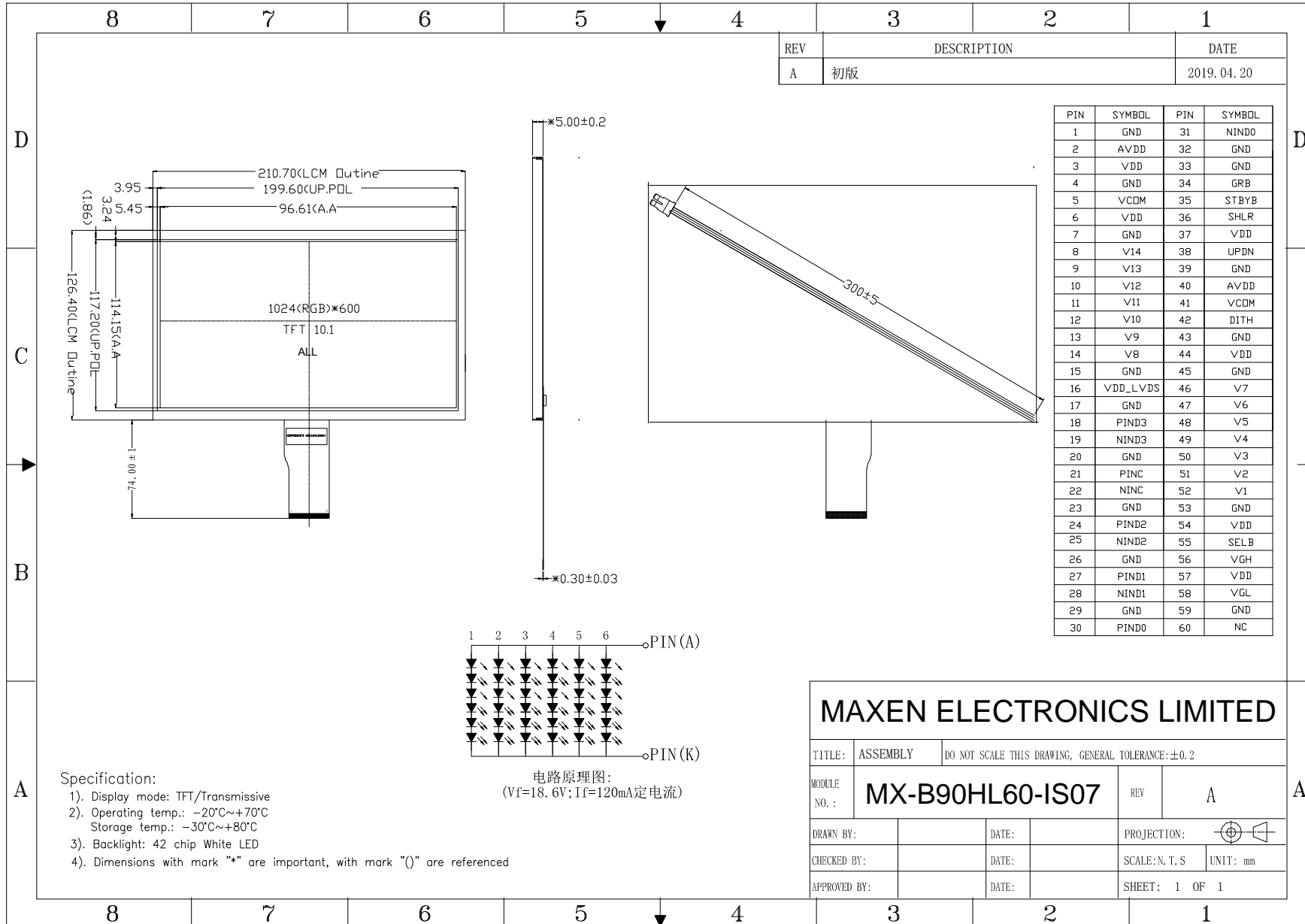


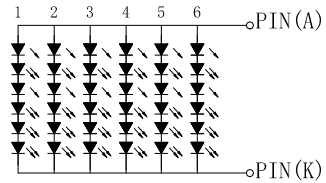
Outline Drawing

MX-B90HL60-IS07



REV	DESCRIPTION	DATE
A	初版	2019.04.20

PIN	SYMBOL	PIN	SYMBOL
1	GND	31	NIND0
2	AVDD	32	GND
3	VDD	33	GND
4	GND	34	GRB
5	VCOM	35	STBYB
6	VDD	36	SHLR
7	GND	37	VDD
8	V14	38	UPDN
9	V13	39	GND
10	V12	40	AVDD
11	V11	41	VCOM
12	V10	42	DITH
13	V9	43	GND
14	V8	44	VDD
15	GND	45	GND
16	VDD_LVDS	46	V7
17	GND	47	V6
18	PIND3	48	V5
19	NIND3	49	V4
20	GND	50	V3
21	PINC	51	V2
22	NINC	52	V1
23	GND	53	GND
24	PIND2	54	VDD
25	NIND2	55	SELB
26	GND	56	VGH
27	PIND1	57	VDD
28	NIND1	58	VGL
29	GND	59	GND
30	PIND0	60	NC



电路原理图:
(Vf=18.6V; If=120mA定电流)

- Specification:
- 1). Display mode: TFT/Transmissive
 - 2). Operating temp.: -20°C~+70°C
Storage temp.: -30°C~+80°C
 - 3). Backlight: 42 chip White LED
 - 4). Dimensions with mark "*" are important, with mark "()" are referenced

MAXEN ELECTRONICS LIMITED

TITLE: ASSEMBLY		DO NOT SCALE THIS DRAWING, GENERAL TOLERANCE: ±0.2	
MODULE NO.:	MX-B90HL60-IS07	REV	A
DRAWN BY:		DATE:	
CHECKED BY:		DATE:	
APPROVED BY:		DATE:	
PROJECTION:		UNIT: mm	
SHEET: 1 OF 1			

MAXEN ELECTRONICS LIMITED
 Email: info@maxen-lcdsdisplay.com Https:// www.maxen-lcdsdisplay.com