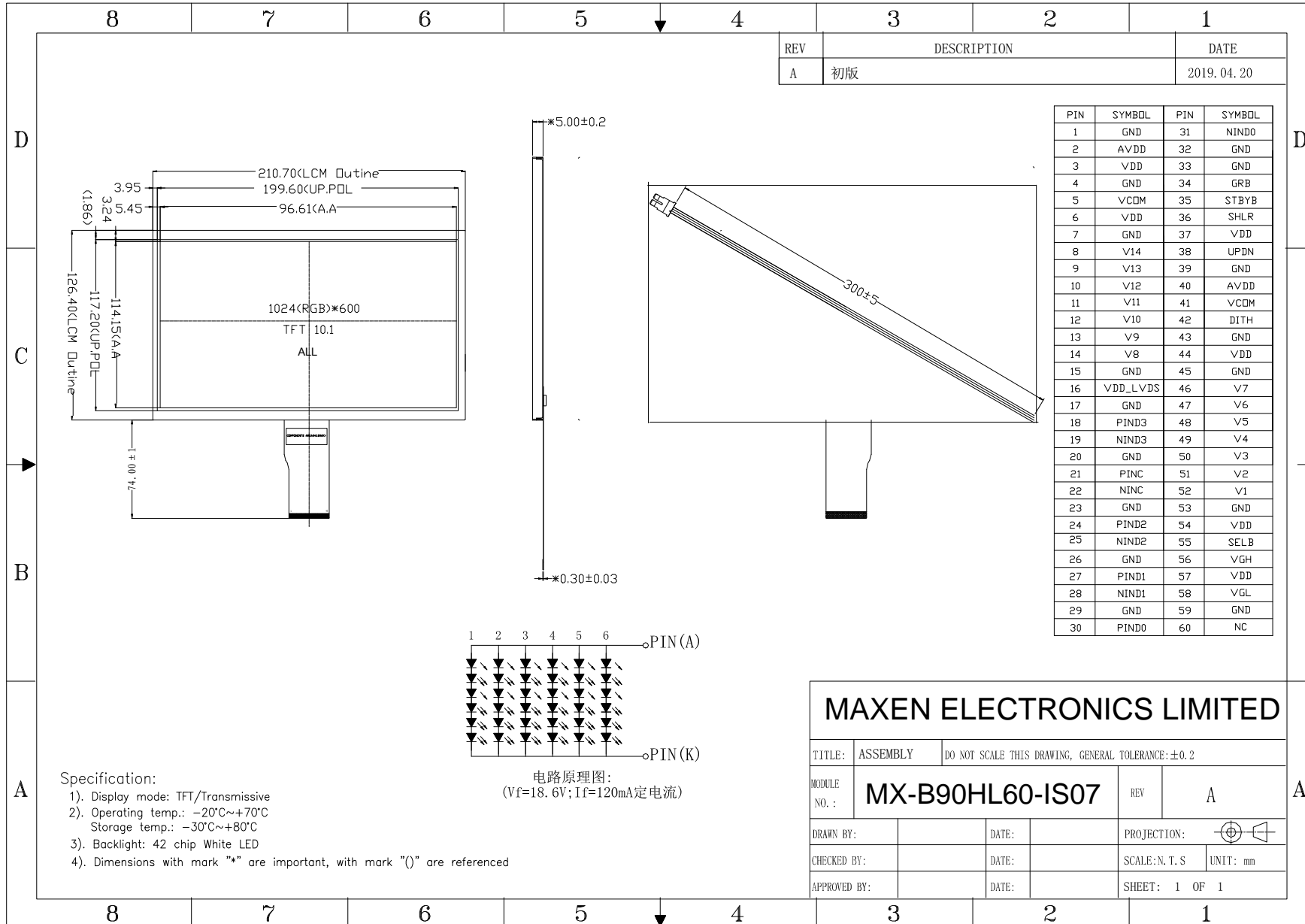


# Outline Drawing

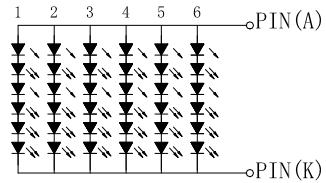


MX-B90HL60-IS07



| REV | DESCRIPTION | DATE       |
|-----|-------------|------------|
| A   | 初版          | 2019.04.20 |

| PIN | SYMBOL   | PIN | SYMBOL |
|-----|----------|-----|--------|
| 1   | GND      | 31  | NIND0  |
| 2   | AVDD     | 32  | GND    |
| 3   | VDD      | 33  | GND    |
| 4   | GND      | 34  | GRB    |
| 5   | VCOM     | 35  | STBYB  |
| 6   | VDD      | 36  | SHLR   |
| 7   | GND      | 37  | VDD    |
| 8   | V14      | 38  | UPDN   |
| 9   | V13      | 39  | GND    |
| 10  | V12      | 40  | AVDD   |
| 11  | V11      | 41  | VCOM   |
| 12  | V10      | 42  | DITH   |
| 13  | V9       | 43  | GND    |
| 14  | V8       | 44  | VDD    |
| 15  | GND      | 45  | GND    |
| 16  | VDD_LVDS | 46  | V7     |
| 17  | GND      | 47  | V6     |
| 18  | PIND3    | 48  | V5     |
| 19  | NIND3    | 49  | V4     |
| 20  | GND      | 50  | V3     |
| 21  | PINC     | 51  | V2     |
| 22  | NINC     | 52  | V1     |
| 23  | GND      | 53  | GND    |
| 24  | PIND2    | 54  | VDD    |
| 25  | NIND2    | 55  | SELB   |
| 26  | GND      | 56  | VGH    |
| 27  | PIND1    | 57  | VDD    |
| 28  | NIND1    | 58  | VGL    |
| 29  | GND      | 59  | GND    |
| 30  | PIND0    | 60  | NC     |



电路原理图:  
(Vf=18.6V; If=120mA定电流)

- Specification:
- 1). Display mode: TFT/Transmissive
  - 2). Operating temp.: -20°C~+70°C  
Storage temp.: -30°C~+80°C
  - 3). Backlight: 42 chip White LED
  - 4). Dimensions with mark "\*" are important, with mark "()" are referenced

**MAXEN ELECTRONICS LIMITED**

|              |                        |   |                       |
|--------------|------------------------|---|-----------------------|
| TITLE:       | ASSEMBLY               | DO NOT SCALE THIS DRAWING, GENERAL TOLERANCE:±0.2 |                       |
| MODULE NO.:  | <b>MX-B90HL60-IS07</b> | REV   | A                     |
| DRAWN BY:    |                        | DATE:   | PROJECTION:           |
| CHECKED BY:  |                        | DATE:   | SCALE: N.T.S UNIT: mm |
| APPROVED BY: |                        | DATE:   | SHEET: 1 OF 1         |

**MAXEN ELECTRONICS LIMITED**  
 Email: info@maxen-lcddisplay.com    Https:// www.maxen-lcddisplay.com