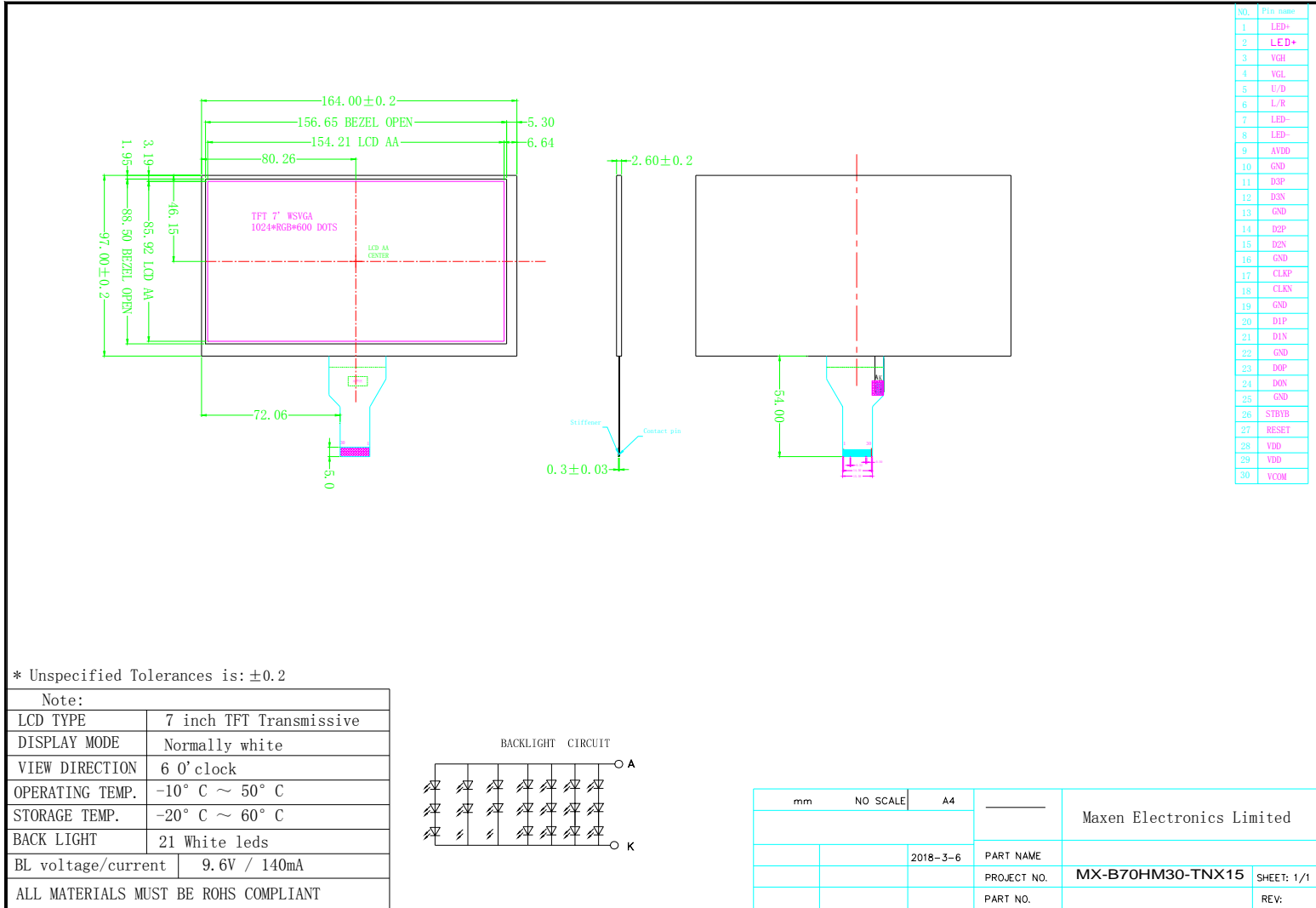
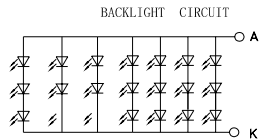


Mechanical Dimension



* Unspecified Tolerances is: ±0.2

Note:	
LCD TYPE	7 inch TFT Transmissive
DISPLAY MODE	Normally white
VIEW DIRECTION	6 O'clock
OPERATING TEMP.	-10° C ~ 50° C
STORAGE TEMP.	-20° C ~ 60° C
BACK LIGHT	21 White leds
BL voltage/current	9.6V / 140mA
ALL MATERIALS MUST BE ROHS COMPLIANT	



mm	NO SCALE	A4	Maxen Electronics Limited	
		2018-3-6	PART NAME	
			PROJECT NO.	MX-B70HM30-TNX15 SHEET: 1/1
			PART NO.	REV: