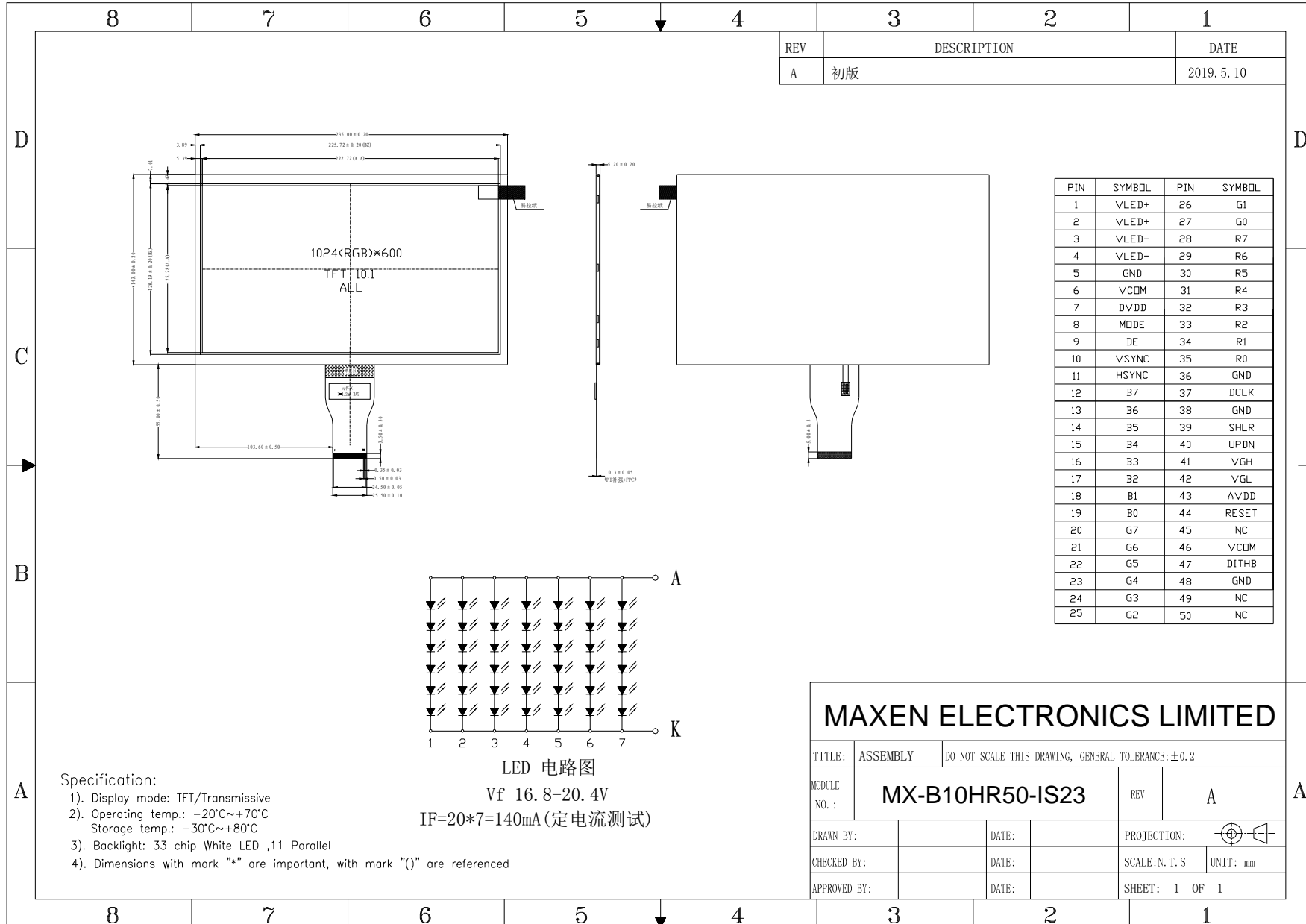


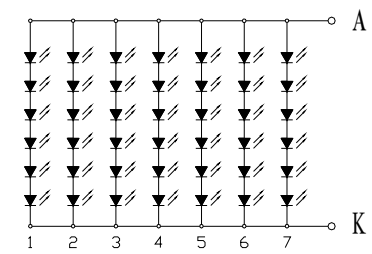
# Outline Drawing

MX-B10HR50-IS23



REV	DESCRIPTION	DATE
A	初版	2019.5.10

PIN	SYMBOL	PIN	SYMBOL
1	VLED+	26	G1
2	VLED+	27	G0
3	VLED-	28	R7
4	VLED-	29	R6
5	GND	30	R5
6	VCOM	31	R4
7	DVDD	32	R3
8	MODE	33	R2
9	DE	34	R1
10	VSYNC	35	R0
11	HSYNC	36	RD
12	B7	37	DCLK
13	B6	38	GND
14	B5	39	SHLR
15	B4	40	UPDN
16	B3	41	VGH
17	B2	42	VGL
18	B1	43	AVDD
19	B0	44	RESET
20	G7	45	NC
21	G6	46	VCOM
22	G5	47	DITHB
23	G4	48	GND
24	G3	49	NC
25	G2	50	NC



LED 电路图  
 $V_f$  16.8-20.4V  
 $I_F=20*7=140mA$  (定电流测试)

- Specification:
- 1). Display mode: TFT/Transmissive
  - 2). Operating temp.:  $-20^{\circ}C \sim +70^{\circ}C$   
Storage temp.:  $-30^{\circ}C \sim +80^{\circ}C$
  - 3). Backlight: 33 chip White LED ,11 Parallel
  - 4). Dimensions with mark "\*" are important, with mark "()" are referenced

MAXEN ELECTRONICS LIMITED			
TITLE:	ASSEMBLY	DO NOT SCALE THIS DRAWING, GENERAL TOLERANCE: $\pm 0.2$	
MODULE NO.:	MX-B10HR50-IS23	REV	A
DRAWN BY:		DATE:	
CHECKED BY:		DATE:	
APPROVED BY:		DATE:	
PROJECTION:			
SCALE: N.T.S		UNIT: mm	
SHEET: 1 OF 1			

**MAXEN ELECTRONICS LIMITED**  
 Email: info@maxen-lcddisplay.com    Https:// www.maxen-lcddisplay.com