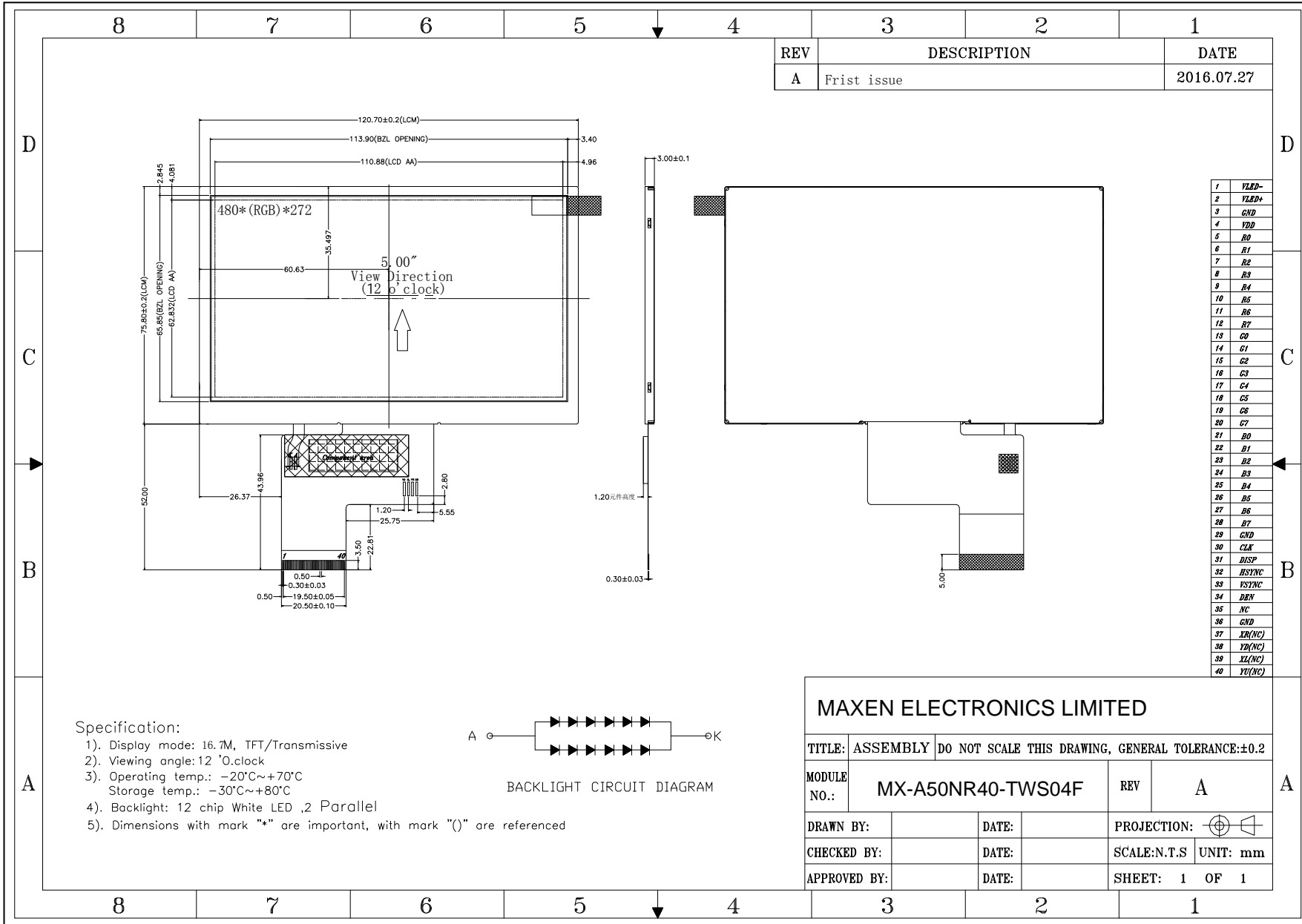


# Outline Drawing

MX-A50NR40-TWS04F

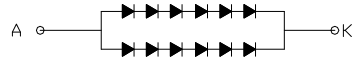


REV	DESCRIPTION	DATE
A	Frist issue	2016.07.27

1	VLED-
2	VLED+
3	GND
4	VDD
5	R0
6	R1
7	R2
8	R3
9	R4
10	R5
11	R6
12	R7
13	G0
14	G1
15	G2
16	G3
17	G4
18	G5
19	G6
20	G7
21	B0
22	B1
23	B2
24	B3
25	B4
26	B5
27	B6
28	B7
29	GND
30	CLK
31	DISP
32	HSYNC
33	VSYNC
34	DBV
35	NC
36	GND
37	XR(NC)
38	YD(NC)
39	XL(NC)
40	YU(NC)

**Specification:**

- 1). Display mode: 16.7M, TFT/Transmissive
- 2). Viewing angle: 12 'O'clock
- 3). Operating temp.: -20°C~+70°C  
Storage temp.: -30°C~+80°C
- 4). Backlight: 12 chip White LED ,2 Parallel
- 5). Dimensions with mark "\*" are important, with mark "()" are referenced



BACKLIGHT CIRCUIT DIAGRAM

**MAXEN ELECTRONICS LIMITED**

TITLE: ASSEMBLY		DO NOT SCALE THIS DRAWING, GENERAL TOLERANCE:±0.2	
MODULE NO.:	MX-A50NR40-TWS04F	REV	A
DRAWN BY:		DATE:	
CHECKED BY:		DATE:	
APPROVED BY:		DATE:	
PROJECTION:		UNIT: mm	
SHEET: 1 OF 1			

**MAXEN ELECTRONICS LIMITED**  
 Email: info@maxen-lcddisplay.com    Https:// www.maxen-lcddisplay.com