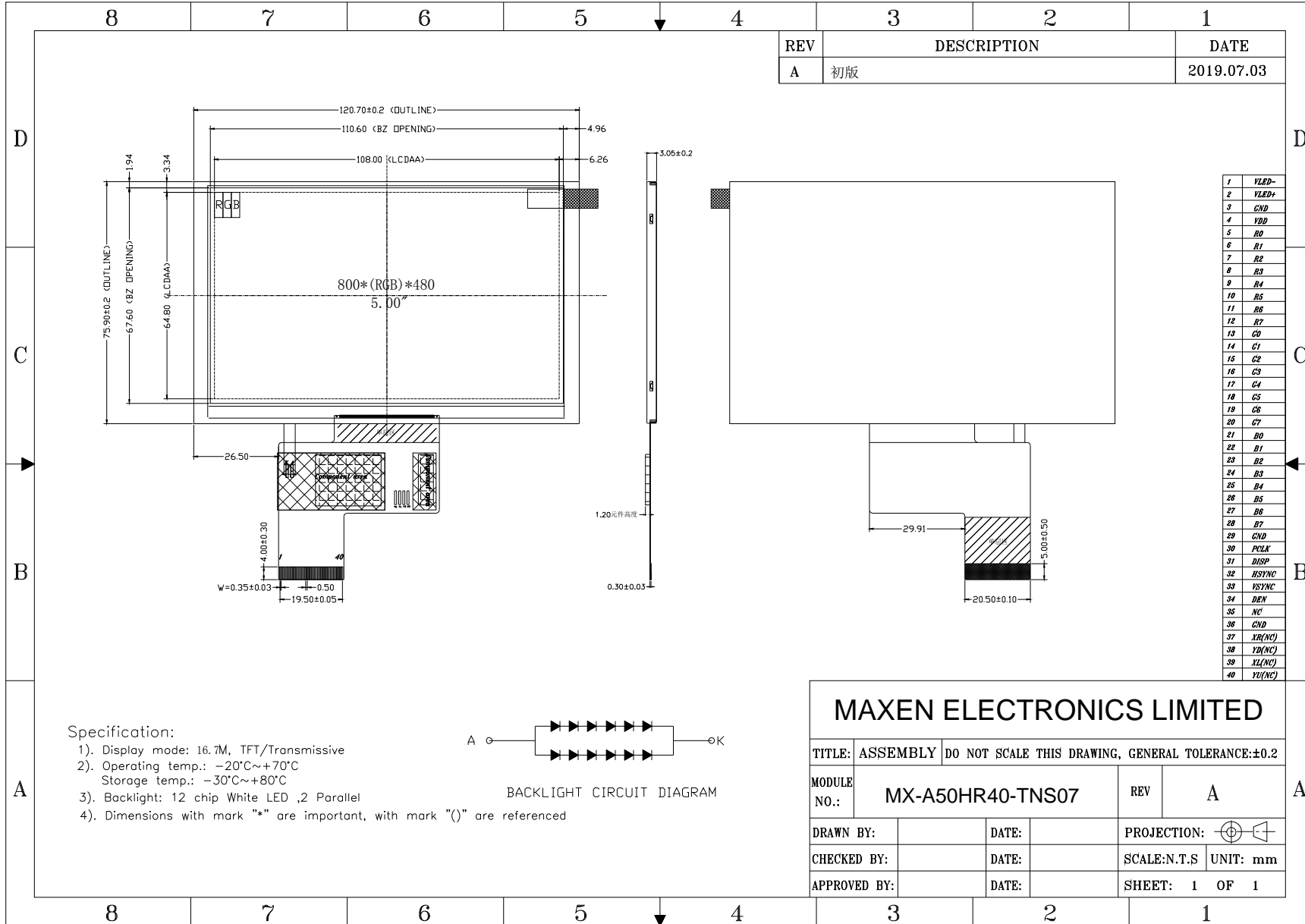


Outline Drawing

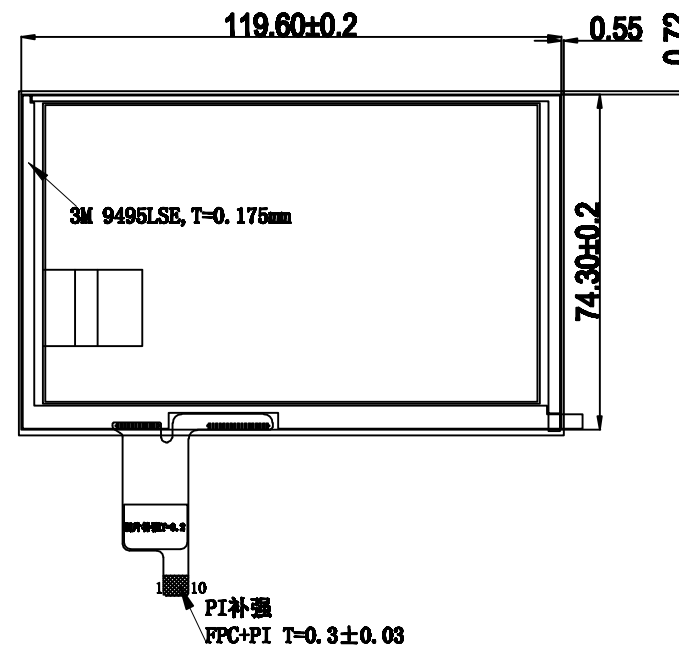
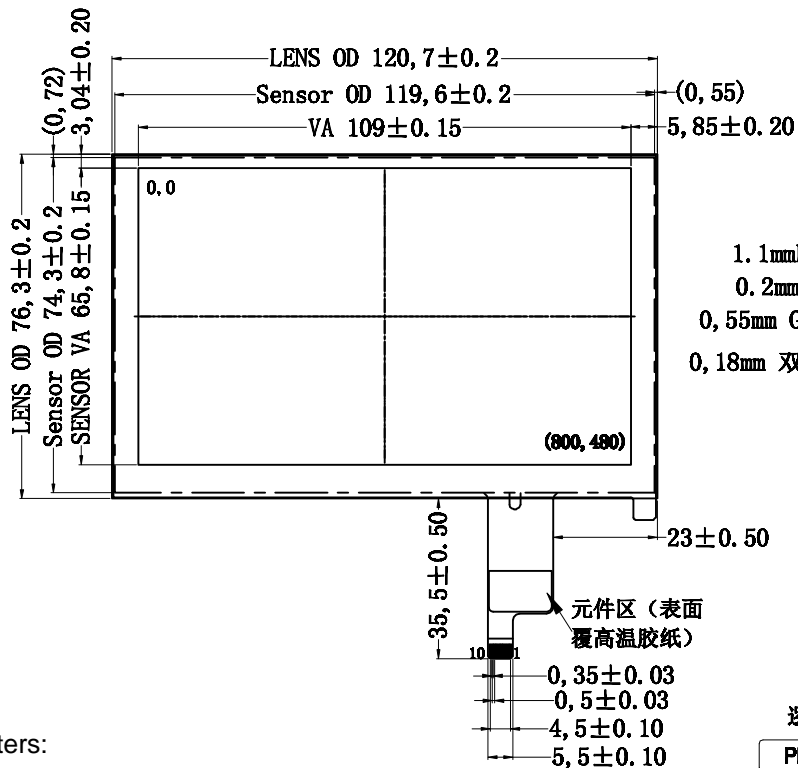


| | | |
|-----|------------------------|------------|
| Rev | Nature of Modification | DATE |
| 01 | 初版 | 2017/09/01 |

FRONT VIEW

SIDE VIEW

BACK VIEW



Parameters:

- IC:GT911
- Working volt.:2.8-3.3V
I2C communication voltage:2.8V-3.3V
- Transparency rate > 80%
- Surface hardness: 6H
- Working temp.: -10 to 60 degree, < 90%RH
- Storage temp.: -20 to 70 degree, < 90%RH
- Unmarked tolerance +/- 0.2mm
- ROHS compliance

逻辑定义

| PIN | 定义 |
|-----|------|
| 1 | VSS |
| 2 | VDD |
| 3 | SCL |
| 4 | VSS |
| 5 | SDA |
| 6 | VSS |
| 7 | /RST |
| 8 | NC |
| 9 | INT |
| 10 | VSS |

| | | | |
|------------------------------|-------------|---------------------------|---------------------|
| SCALE: 1 : 1 NOT TO SCALE | | MAXEN ELECTRONICS LIMITED | |
| PAGE: 1 OF 1 | | | |
| GENERAL TOL. 0.50mm | UNITS MM | | |
| APPROVALS | DATE | MODEL NUMBER : | CUSTOMER NO.: |
| APP: | | MX-GG050H023-1.0 | DATE: 2017-09-01 |
| CHK: | | | |
| DWN: YANHAI | 2017-09-01 | | |