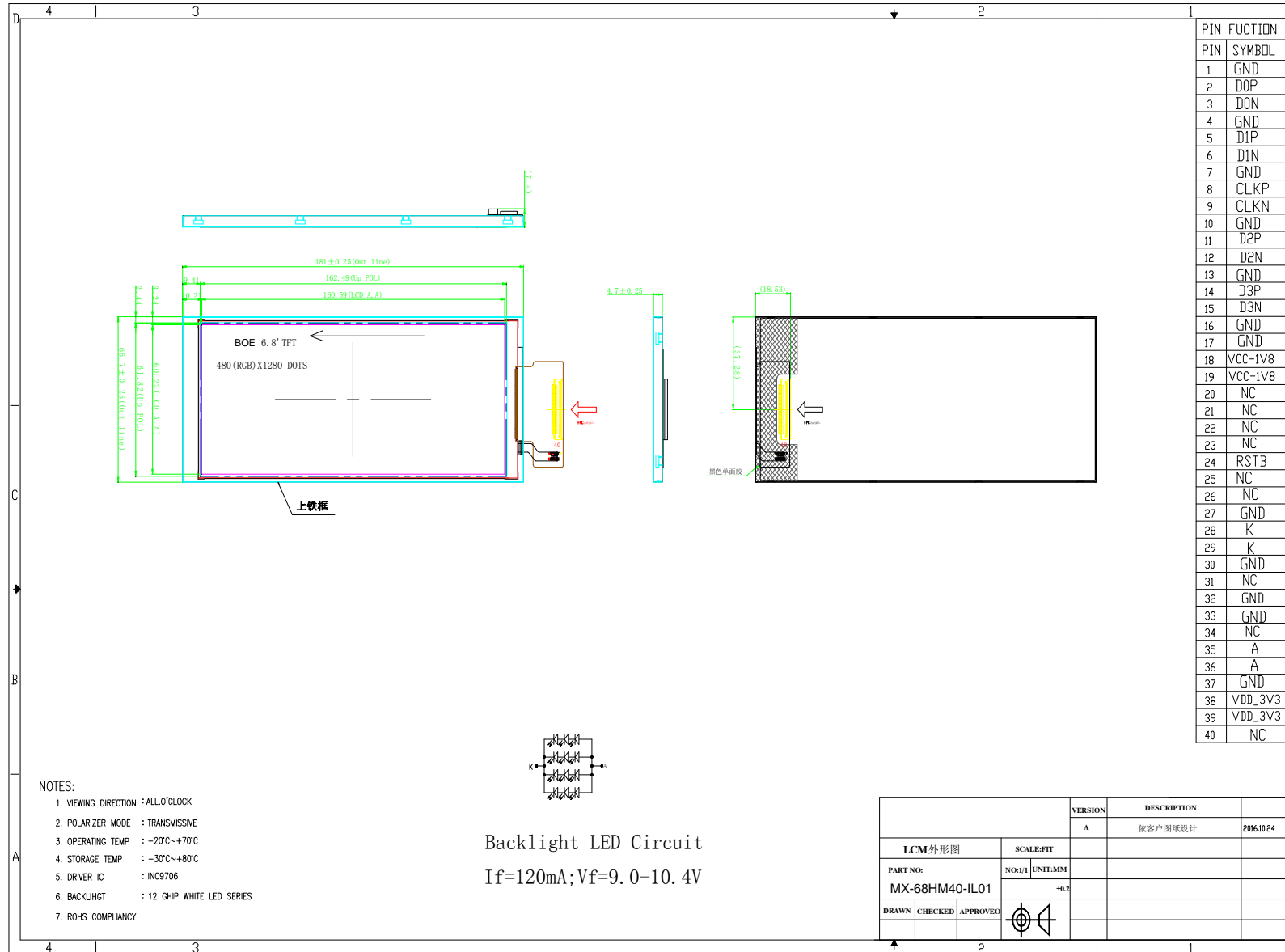


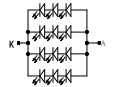
MAXEN ELECTRONICS LIMITED

Email: melody.xia@maxen-lcddisplay.com [https:// www.maxen-lcddisplay.com](https://www.maxen-lcddisplay.com)



PIN FUCTION	
PIN	SYMBOL
1	GND
2	D0P
3	D0N
4	GND
5	D1P
6	D1N
7	GND
8	CLKP
9	CLKN
10	GND
11	D2P
12	D2N
13	GND
14	D3P
15	D3N
16	GND
17	GND
18	VCC-1V8
19	VCC-1V8
20	NC
21	NC
22	NC
23	NC
24	RSTB
25	NC
26	NC
27	GND
28	K
29	K
30	GND
31	NC
32	GND
33	GND
34	NC
35	A
36	A
37	GND
38	VDD_3V3
39	VDD_3V3
40	NC

- NOTES:
- VIEWING DIRECTION : ALL O'CLOCK
 - POLARIZER MODE : TRANSMISSIVE
 - OPERATING TEMP : -20°C~+70°C
 - STORAGE TEMP : -30°C~+80°C
 - DRIVER IC : INC9706
 - BACKLIGHT : 12 GHIP WHITE LED SERIES
 - ROHS COMPLIANCY



Backlight LED Circuit
 $I_f = 120\text{mA}$; $V_f = 9.0 - 10.4\text{V}$

		VERSION	DESCRIPTION	
LCM外形图		A	依客户图纸设计	2016.10.24
PART NO: MX-68HM40-IL01		SCALE:FT		
DRAWN		NO:1/1	UNIT:MM	
CHECKED	APPROVED			±0.2