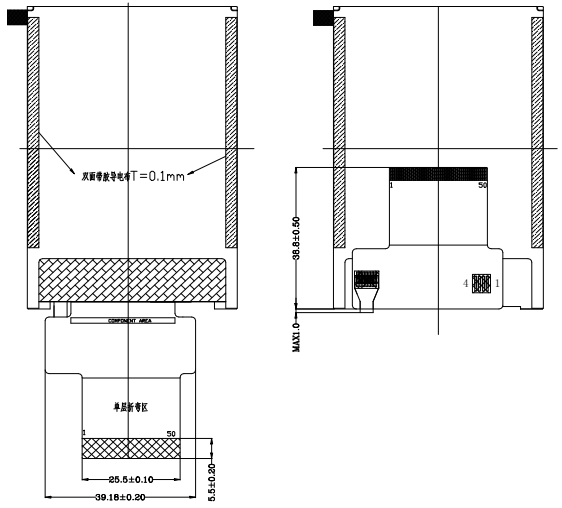
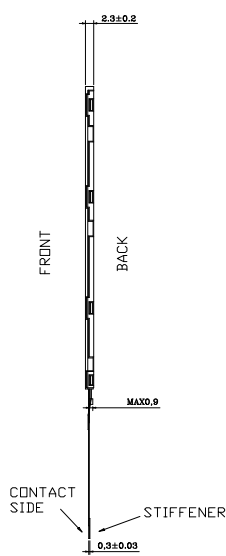
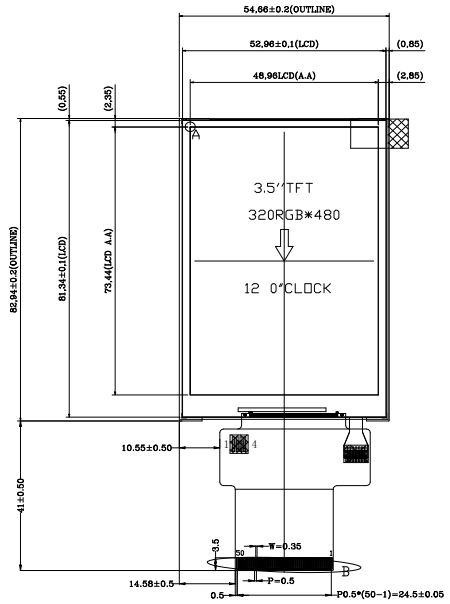


Mechanical Drawing

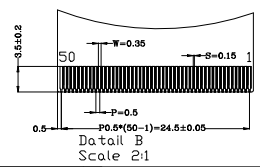
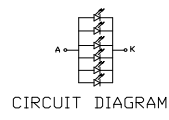
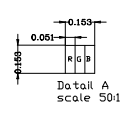
MX-35HM50-TWT04

1	LEDK
2	LEDA
3	LEDA
4	LEDA
5	LEDA
6	MO
7	DN
8	DN2
9	NC
10	RESET
11	VSYNC
12	HSYNC
13	DOTCLK
14	DE
15	DB17
16	DB16
17	DB15
18	DB14
19	DB13
20	DB12
21	DB11
22	DB10
23	DB9
24	DB8
25	DB7
26	DB6
27	DB5
28	DB4
29	DB3
30	DB2
31	DB1
32	DB0
33	SDI
34	SDI
35	RD
36	WRX/SCL
37	D/CX
38	CSX
39	TE
40	VDDI
41	VDDI
42	VBI
43	GND
44	NC X(OLED)
45	NC Y(OLED)
46	NC X(OLED)
47	NC Y(OLED)
48	GND
49	GND
50	GND



注：玻璃靠下装

NOTES:
 1.General Tolerance:±0.2
 2.Referenced Dimension()
 3.RDHS must be complied



Display Type	262K COLOR TFT
	NORMAL WHITE
	TRANSMISSIVE
LCD Driver IC	ILI9488
Viewing Angle	12 O'CLOCK
Operating Voltage	VDDI/VCI=2.8V
Operation Temperature	-20°C TO 70°C
Storage Temperature	-30°C TO 80°C
Interface	8/9/16/18-bit 8080 or RGB or SPI
Backlight Color	6-LED WHITE
surface luminance	400cd/m ²
White X/Y	X:0.29±0.02 Y:0.33±0.02

					DRAWN	TITLE	DRAWING NO.			
					CHECKED	MODULE SPEC.	MX-35HM50-TWT04			
					APPROVED		UNIT	mm	SCALE	FIT
V00.		Frist issue		2013.12.11	CUSTOMER'S APPROVAL		3rd Angle		SHEET	1 OF 1
VER.	SYMBOL	AMENDMENT	SIGN	DATE		Maxen Electronics Limited				

MAXEN ELECTRONICS LIMITED
 Email: info@maxen-lcddisplay.com Https:// www.maxen-lcddisplay.com