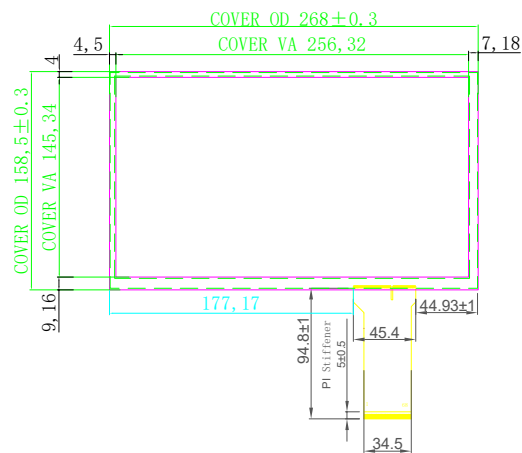


Rev.	Revision Record	制作	日期
A0	首次发行	Y	2019-07-19

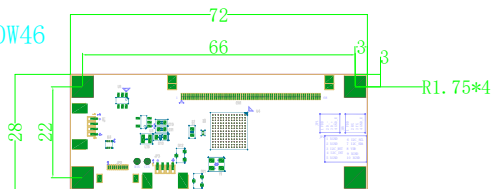
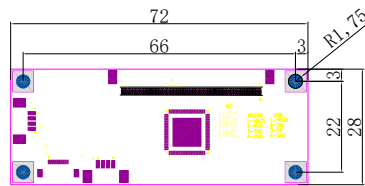
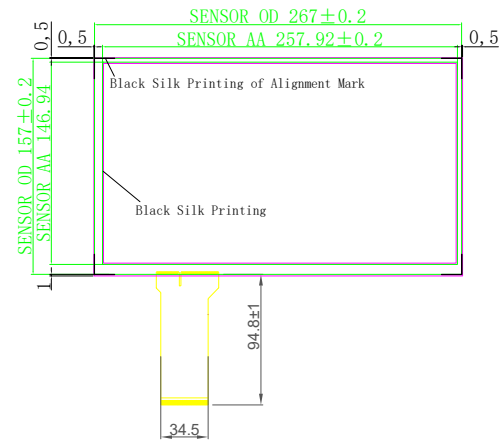
Front View

Side View

Back View



T=2.7 (Back Adhesive Tape Excluded)
COVER T=1.8
SCA T=0.2
SENSOR T=0.7



Technical Parameters:

1. TP Structure:G+G;Operating Voltage:5V
2. TP Type:COB;IC Model Optional:ILI2511/EXC80W46 HA2511P. P1. C3/EXC80W462341STAG
3. Transparency $\geq 85\%$
4. Surface Hardness:6H以上
5. Operating Environment: $-20^{\circ}\text{C}\sim+70^{\circ}\text{C}$, $\leq 85\%\text{RH}$
6. Storage Environment: $-20^{\circ}\text{C}\sim+70^{\circ}\text{C}$, $\leq 85\%\text{RH}$
7. Unmarked Tolerance $\pm 0.2\text{mm}$
8. RoHS Compliant

One PCB board will be assigned to each touch panel

(3: 1)

ILI I2C Communication	
PIN	Assignment
1	GND
2	GND
3	VDD
4	SDA
5	SCL
6	GND
7	INT
8	RST
9	GND
10	GND

J1 (USB Communication)	
PIN	Assignment
1	VDD/5V
2	D-
3	D+
4	GND

EXC I2C Communication	
PIN	Assignment
1	GND
2	GND
3	RST
4	INT
5	GND
6	SCL
7	SDA
8	VDD3.3
9	GND
10	GND

MAXEN ELECTRONICS LIMITED

TITLE: 产品编号	HCT-116001H-3A				
Designed By: 设计	Y	Customerid: 客户编号		View: 投影方式	
Checked By: 审核		Unit: 单位	mm	Date: 日期	2019.07.19
Approved By:		Scale: 比例	1:1		