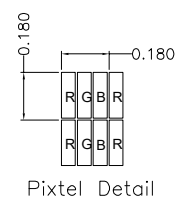
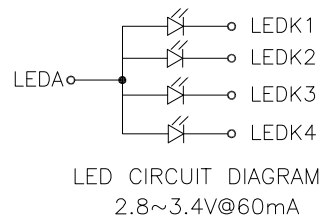


弯折出货

Recommended connectors:
XF2M-3315-1A OR Equivalent



PIN NO	SYMBOL
1	GND
2	GND
3	/CS-MAIN
4	DC
5	/WR
6	/RD
7	DB0
8	DB1
9	DB2
10	DB3
11	DB4
12	DB5
13	DB6
14	DB7
15	SDA
16	SDO
17	/LCD RESET
18	IM0
19	IM1
20	GND
21	GND
22	IM2
23	IM3
24	ID(GND)
25	GND
26	VCC
27	IOVCC
28	LED_K1
29	LED_K2
30	LED_K3
31	LED_K4
32	LED_A
33	LED_A

NOTES:
1. General Tolerance:±0.2;
2. () reference dimension;
3. RoHS must be compliant.

Display Type	TFT, TRANSMISSIVE NORMALLY BLACK
Optimum Viewing Direction	ALL (80/80/80/80)
Top Polarizer Type	ANTI-GLARE
LCD Driver IC	IC-ST7789T3-G4-1
Operating Voltage	VDD=2.8V; IOVCC=1.8V
Operating Temperature	-20°C TO 70°C
Storage Temperature	-30°C TO 80°C
Interface	4 wire SPI
Backlight	4-CHIPS WHITE LED
Surface Luminance	300cd/m2 (typ.)
White X/Y	--

					DRAWN	DENG 20231023	TITLE MODULE SPEC.	DRAWING NO. MX-028NS33BFS-N06			
					ME.CHECKED			UNIT	mm	SCALE	FIT
					EE.CHECKED	LBL 20231018		3rd Angle			
					APPROVED			SHEET 1 OF 1			
V00		First issue	DENG	2023.10.23A	CUSTOMER'S APPROVAL						
VER.	SYMBOL	AMENDMENT	SIGN	DATE							