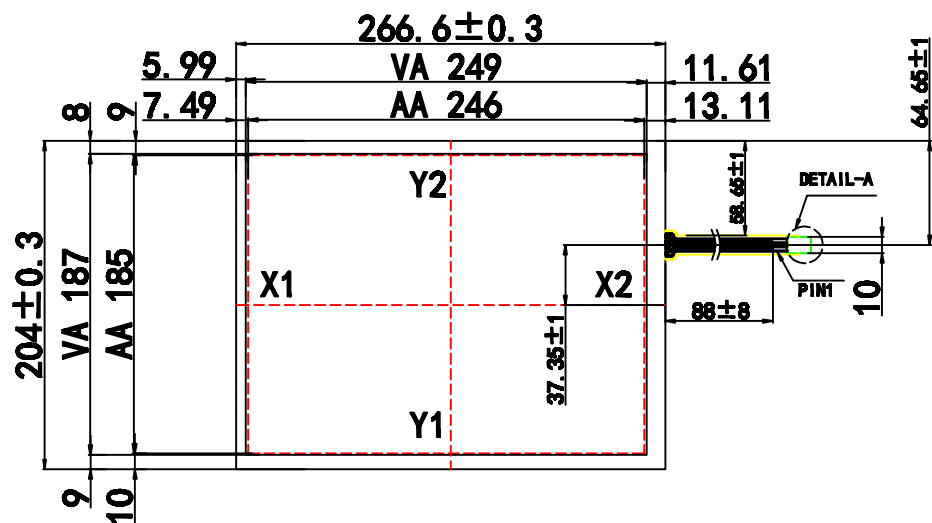


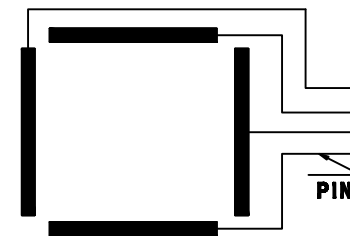
由 Autodesk 教育版产品制作

标记(mark)	修改内容(revised contents)	签名(signature)	日期(Date)
1			

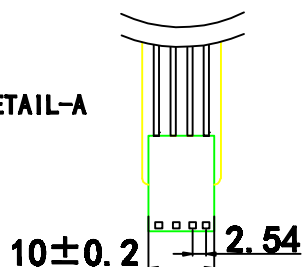


Contact Side:

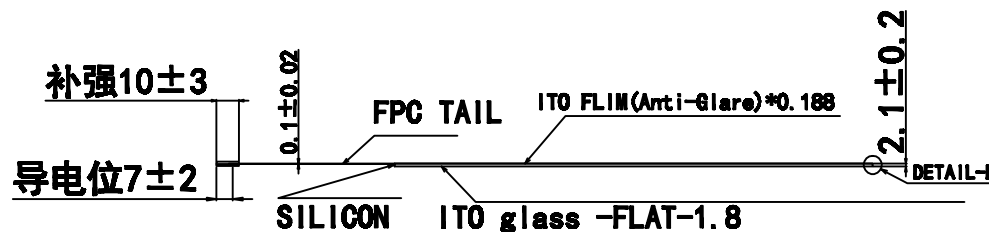
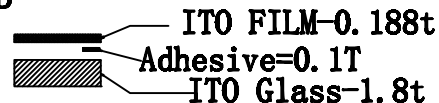
CONNECTOR PINOUT	
PIN NO.	DESIGNATION
1	Y1
2	X2
3	Y2
4	X1



DETAIL-A



DETAIL-B



TS004-83.5

Instruction:

1. Type: Film to Glass
2. Operating Voltage: 3~7V
3. Response Time: ≤15ms
4. Storage Temperature: -20℃~+50℃/20%~80%
5. Operation Temperature/Humidity: -10℃~+50℃/20%~80%
6. Hitting Life: >10,000,00 Times. 100gf Force
7. Writting Life: >1,000,00 Times. 100gf Force
8. Connect Material: FPC

9. Film Thickness: 0.188mm
10. Glass Thickness: 1.8mm
11. Light Transmission: ≥78%
12. Force: 100g or less
13. Linearity: ≤1.5%
14. Insulation: ≥20MΩ
15. Surface Hardness: ≥3H(pencil)
16. Unmarked tolerance as ±0.5

TITLE: 产品编号		Designed By: 设计	AMT-9542	View: 投影方式	
Customerid: 客户编号		Checked By: 审核		Scale: 比例	1:1
Unit: 单位	mm	Approved By: 批准			
Date: 日期					

由 Autodesk 教育版产品制作

由 Autodesk 教育版产品制作

由 Autodesk 教育版产品制作